

Clinical Programme Approach and Partnership Working

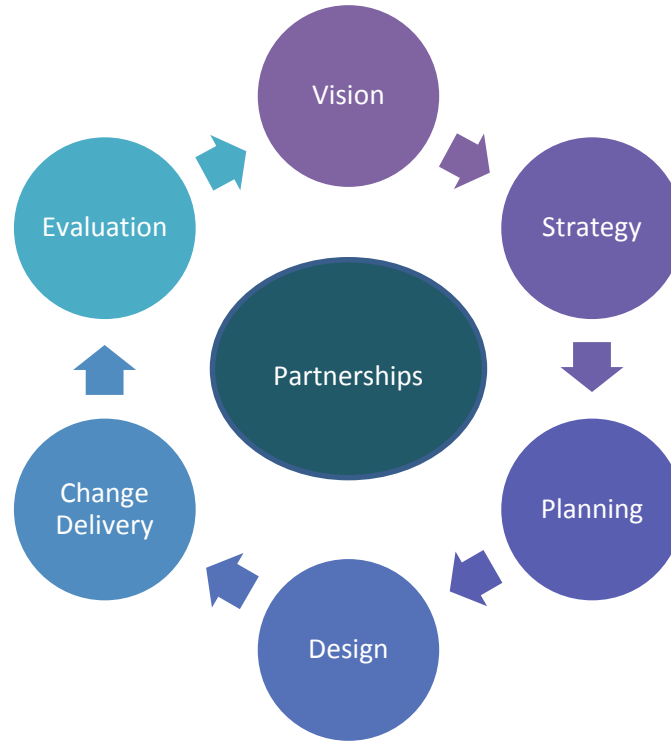
Gemma Artz & Matt Lennard
September 2023



The Clinical Programme Approach: Transforming Care

The clinical programme approach is designed to systematically redesign the way care is delivered in the One Gloucestershire system by reorganising and integrating systems to deliver the right care, in the right place, at the right time.

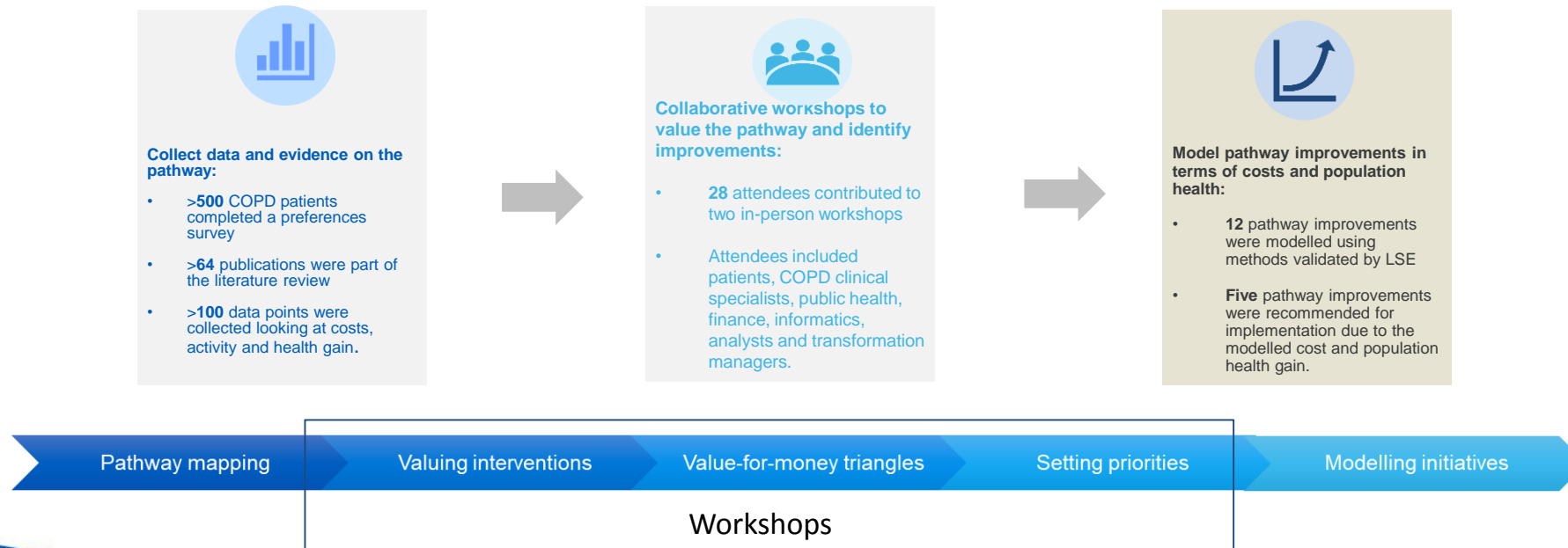
Using the principles of value based health care the clinical programme approach uses a population health approach to improve care and reduce health inequalities.



- High value and quality care and support
- Reducing health inequalities
- Environmental sustainability
- What matters to me
- Supported self- management
- Earlier diagnosis and access to intervention
- Population health data and benchmarking
- Workforce

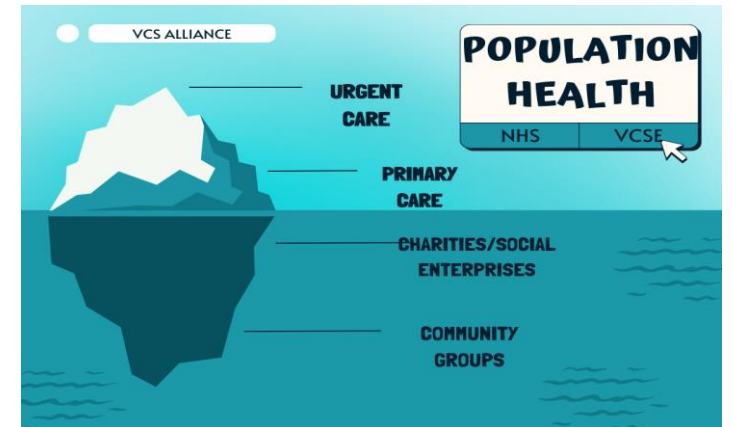
STAR PROCESS: An example of using data and evidence to support clinical programme approach

- Clinical Programme use a range of sources and have networks of experts and users by experience to inform the approach.
- All programmes have work plans for the year, based on the need identified through data, user experience and clinical evidence.
- This example used in respiratory shows an approach that was used to evidence the highest value interventions to inform the programme on the priorities for the system to transform (Further detail can be found in Appendix 1)



How are we linking in with partners across the partnership?

- Clinical programmes have a range of partners from across the partnership as members of CPGs
- Recent voluntary sector event attended by over 47 organisations, informing how we can best engage with the VCSE going forward.
- Engagement with Primary Care Networks and Integrated Locality Partnerships to identify local need and support locally driven innovations
- Working together with partnership on exemplar themes
- Engagement events and 2-way communication with partners



Engagement event: What we learned

- Shared desire to work together
- Coordination and joined up approach
- Communication, sharing good practice, language and public perceptions
- Funding – investment: staffing, training and resources
- Integration, mindset, trust and relationships
- Data and measuring improvement



How we can support ongoing engagement.

1. Act as a first point of contact, a conduit between the CPGs and VCSE.
2. Periodic shared news updates – what's new in CPG's? Introduce VCSE projects and organisations that are contributing to health and wellbeing
3. Identify individuals from relevant VCSE organisations to present at a CPG meeting
4. Investigate the potential of a shared online platform for informal dialogue – Teams, Sharepoint, Slack