

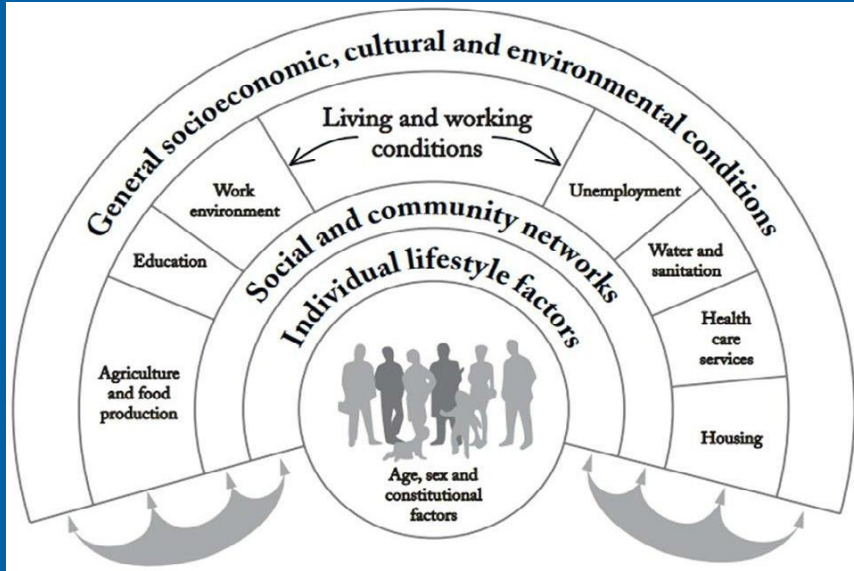
How does Local Government contribute to the Gloucestershire Integrated Care Strategy

- A spotlight on Cotswold District Council -

Jacqueline Wright (Community Wellbeing Manager)

Context

Wider Determinants of Health and how district council services can support the health and care system.



Source: Dahlgren and Whitehead



COTSWOLD
DISTRICT COUNCIL

Purpose & Principles of Working

Why are we here?

We want to help improve people's quality of life.

How do we do that?

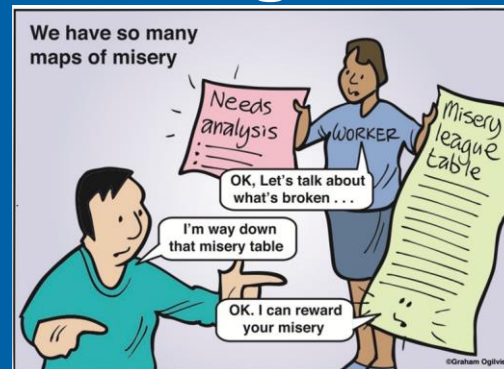
We aim to empower communities, increase community resilience and improve health and wellbeing.

What are we doing to achieve that?

We engage, listen and build community capacity.

We proactively bring ideas, people, organisations and resources together to enable a rich diversity of sustainable projects, innovative responses to local social challenges and new life-enhancing opportunities for the benefit of everyone.

LOCAL! – COLLABORATION! – PARTNERSHIPS!



“Focus on what’s strong, not what’s wrong

Source: www.nurtureddevelopment.org



COTSWOLD
DISTRICT COUNCIL

Highlights and Impact



'Thanks for doing a fantastic job hosting the meetings which are always really informative and useful.'

'What a great idea! I am finding out about so many groups I didn't know about! Thank you, Clare!'



'I do love the way that the Cotswold Community Network enables all these connections and makes collaboration possible'



*Total funds raised by backed projects
£602,104*

340% leverage on Council funds overall

Crowdfund Cotswold won the 'Community Involvement Award' at the Local Government Chronicle Awards in July 2022



'I've been using a fit kit for 5 weeks every day. The difference it's made to my legs is amazing. If I fell over before, I couldn't get up and had to crawl to the sofa. Now I can get straight up. Sunday I walk



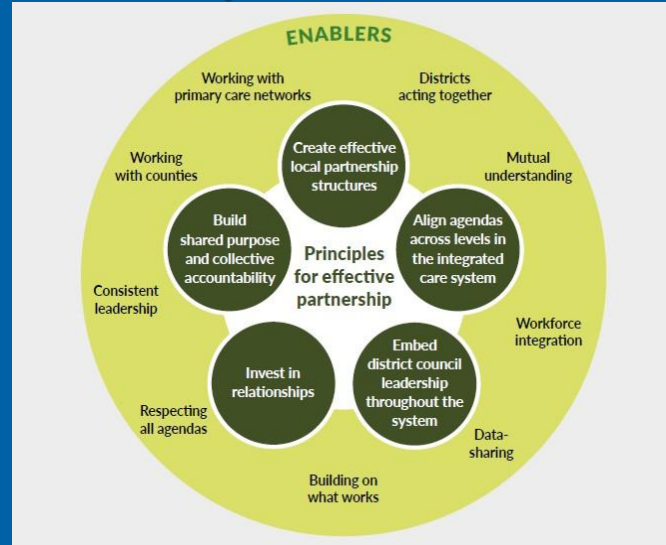
Opportunities

We would like to be more proactive & target specific cohorts!
Early prevention!

How can we get better at sharing data, insight & knowledge?

As a local anchor organisation with skills, knowledge, local links and passion we want & can do more!

How can you enable us?



Better access to services **LOCALLY** in rural/isolated communities.

Can we help please?
Can we work in partnership locally?

Source: Principles of partnership working and enabling actions (Source: The Kings Fund 2023-“Driving better health outcomes through integrated care systems - The role of district councils”)

We understand your challenges!