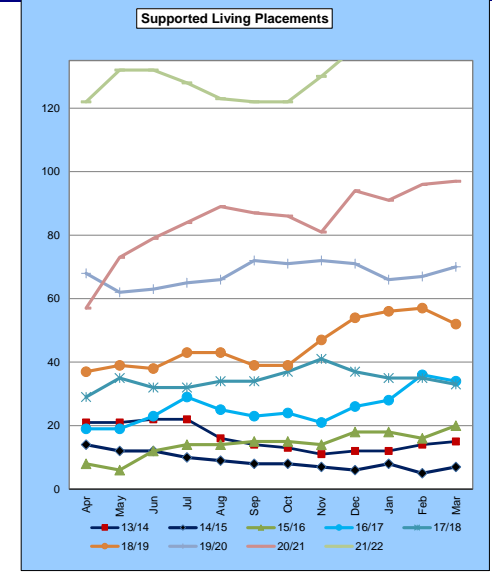
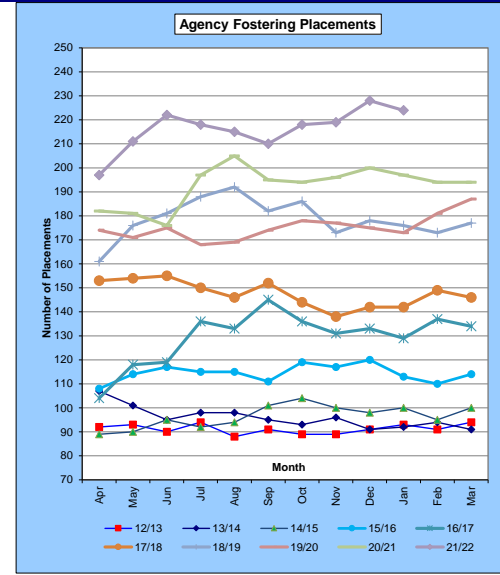
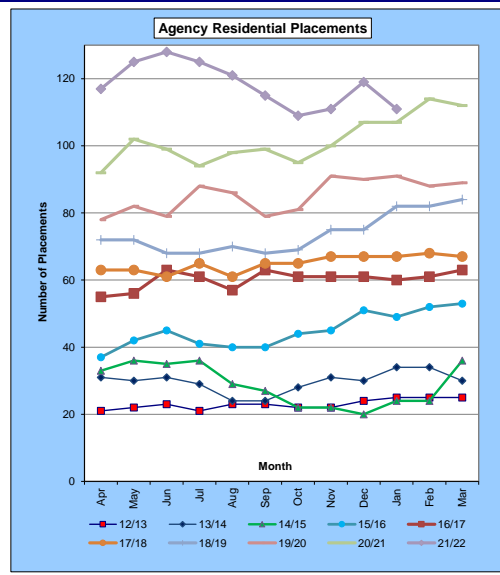
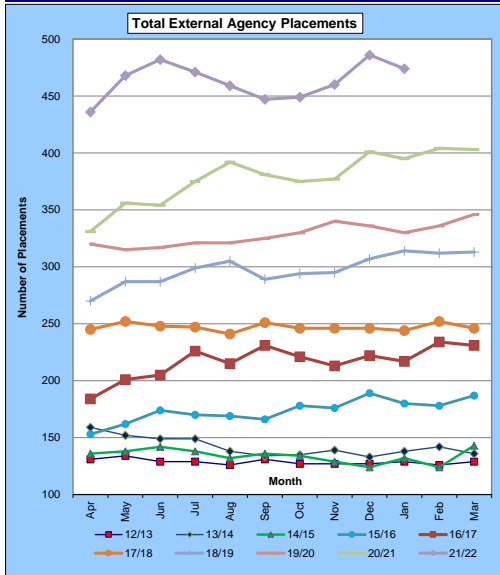


**2021/22 Revenue Budget Monitoring Report**  
**Children & Young People's Services**  
**Activity Analysis - External Placements**



Total Agency Placements											
Mth	12/13	13/14	14/15	15/16	16/17	17/18	18/19	19/20	20/21	21/22	Average
Apr	131	159	136	153	184	245	270	320	331	436	229
May	134	152	138	162	201	252	287	315	356	468	230
Jun	129	149	142	174	205	248	287	317	354	482	229
Jul	129	149	138	170	226	247	299	321	375	471	229
Aug	126	138	132	169	215	241	305	321	392	459	226
Sep	131	134	136	166	231	251	289	325	381	447	231
Oct	127	135	134	178	221	246	294	330	375	449	227
Nov	127	139	129	176	213	246	295	340	377	460	227
Dec	127	133	124	189	222	246	307	336	401	486	227
Jan	129	138	132	180	217	244	314	330	395	474	229
Feb	126	142	124	178	234	252	312	336	404	449	226
Mar	129	136	143	187	231	246	313	346	403	474	229

Total Residential Agency Placements											
Mth	12/13	13/14	14/15	15/16	16/17	17/18	18/19	19/20	20/21	21/22	Average
Apr	21	31	33	37	55	63	72	78	92	117	55
May	22	30	36	42	56	63	72	82	102	125	56
Jun	23	31	35	45	63	61	68	79	99	128	57
Jul	21	29	36	41	61	65	68	88	94	125	55
Aug	23	24	29	40	57	61	70	86	98	121	56
Sep	23	24	27	40	63	65	68	79	99	115	56
Oct	22	28	22	44	61	65	69	81	95	109	55
Nov	22	31	22	45	61	67	75	91	100	111	55
Dec	24	30	20	51	61	67	75	90	107	119	57
Jan	25	34	24	49	60	67	82	91	107	111	58
Feb	25	34	24	52	61	68	82	88	114	114	58
Mar	25	30	36	53	63	67	84	89	112	111	57

Total Fostering Agency Placements											
Mth	12/13	13/14	14/15	15/16	16/17	17/18	18/19	19/20	20/21	21/22	Average
Apr	92	107	89	108	104	153	161	174	182	197	107
May	93	101	90	114	118	154	176	171	181	211	108
Jun	90	95	95	117	119	155	181	175	176	222	106
Jul	94	98	92	115	136	150	188	168	197	218	108
Aug	88	98	94	115	133	146	192	169	205	215	107
Sep	91	95	101	111	145	152	182	174	195	210	108
Oct	89	93	104	119	136	144	186	178	194	218	107
Nov	89	96	100	117	131	138	173	177	196	219	107
Dec	91	91	98	120	133	142	178	175	200	228	108
Jan	93	92	100	113	129	142	176	173	197	224	109
Feb	91	94	95	110	137	149	173	181	194	214	107
Mar	94	91	100	114	134	146	177	187	194	216	108

Supported Living Placements										
Mth	13/14	14/15	15/16	16/17	17/18	18/19	19/20	20/21	21/22	Average
Apr	21	14	8	19	29	37	68	57	122	37
May	21	12	6	19	35	39	62	73	132	37
Jun	22	12	12	23	32	38	63	79	132	38
Jul	22	10	14	29	32	43	65	84	128	38
Aug	16	9	14	25	34	43	66	89	123	37
Sep	14	8	15	23	34	39	72	87	122	37
Oct	13	8	15	24	37	39	71	86	122	37
Nov	11	7	14	21	41	47	72	81	130	36
Dec	12	6	18	26	37	54	71	94	139	37
Jan	12	8	18	28	35	56	66	91	139	37
Feb	14	5	16	36	35	57	67	96	139	38
Mar	15	7	20	34	33	52	70	97	129	37

- Notes**
- Youth Offending placements account for the difference between the number of residential and fostering placements and the total.
  - Activity includes unaccompanied asylum seekers
  - The numbers are based on placements in the database at the end of a month. Previous months figures are updated as information becomes available
  - Prior to 2011/12 supported living placements were included within the fostering figures
  - There were a significant number of placements which came in during March 2013 which were only identified from April