



Gloucestershire Infrastructure Investment Fund 'GIIF'

GIIF Overview

Project title	Category	GIIF Investment	Private Sector Investment	Jobs created/protected
Honeybourne Gate Extra Care Home	Housing	£2.75m	£13.4m	21
Park View (Southgate St) Extra Care Home	Housing	£1.3m	£5.8m	21
Gloucester M5 Services (Southbound)	Infrastructure	£3.0m	£20.34m	400+
Dudbridge Estates (Stroud Metal new factory)	Business Support	£3.5m	£6.025m	101
Shield House Secure Data Centre	Infrastructure	£3.0m	£12.66m	12
Merrywalks Shopping Centre re-development (Stroud)	Business Support	£1.0m	£29m	190
Bakers Quay (Phase 2) re-generation	Housing	£2.5m	£39m	70 (tbc)
270 Climbing Centre	Sport/Leisure	£1.85m	£8m	30 (tbc)
Totals		£18.9m	£122m	845+

GIIF Overview

Honey Bourne Gate Cheltenham

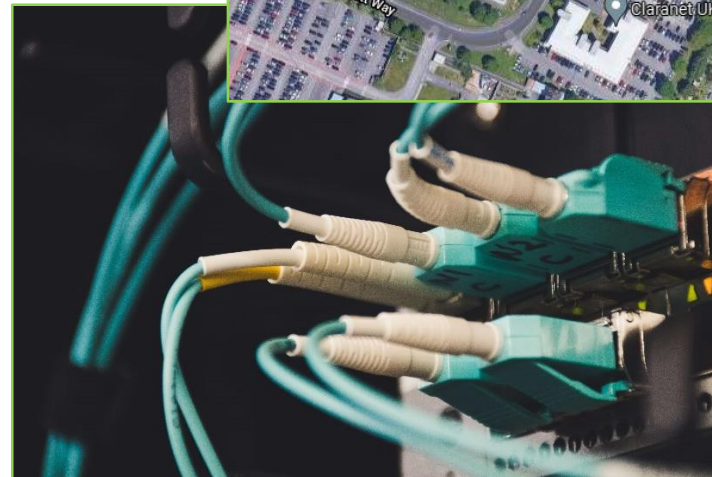
- Brownfield site – first GIIF project
- Extra Care Assisted Living Centre
- 5* Communal Facilities.
- Opened in April 2015
- 54 extra care apartments
- EAC Silver Award 2019 - South West region category for best Housing-with-Care



GIIF Overview

Shield House Data Centre

- Carrier neutral
- A single point of connection for all the major cloud services platforms
- High Security Integrated Data Centre Services - IT as a service
- Designed for low energy use - High Density Racks – up to 30Kw



GIF Overview

Gloucester Services (Southbound)

- Opened May 2015
- GIF provided 'bridging loan' to accelerate delivery
- Significant local employer, c150 jobs
- 130+ producers within 30 miles & 70 South West producers
- £10m over 20 years to Gloucester Gateway Trust
- Now an iconic Gloucestershire feature



GIIF Overview

Governance

- Accountable Body Team at GCC
- Joint LEP/GCC Programme Management Group
- External Independent Due Diligence
- LEP Investment Panel
- LEP Board

Investment Panel Members

Chair, David Owen, GFirst LEP

Vice Chair, Jon Whitbread, Harrison Clarke Rickerbys

Adrian Rowley, Alder King (Construction and Infrastructure Business Group)

Stephen Limbrick, Limbrick Studios (Construction and Infrastructure Business Group)

Nick Upton, Nicholas Upton (Construction and Infrastructure Business Group)

Chris Mears, Boost & Co (Banking & Finance Business)

Nick Haines, Hazlewoods (Banking & Finance Business Group)

Richard Hellen, Hermes Energy Services (Energy Business Group)

Andrew Hopcraft, National Composite Centre

Mark Wilton, HSBC (Banking & Finance Business Group)

Emma Hanby, Campden BRI (LEP Board)

Philip Ardley, Gloucester City Council

Tim Atkins, Cheltenham Borough Council

Mike Dawson, Tewkesbury Borough Council

Charles Amies, Homes England

Colin Chick, Gloucestershire County Council

Kaye Turner, Gloucestershire County Council - Accountable Body Representative

GIIF Overview



Thank you for
your attention!