

# Covid-19 Response and Approach to Recovery

Cabinet 17<sup>th</sup> June 2020

# Response

## Protect the most vulnerable – Adult Social Care

- 10% supplier relief to all providers
- Adequate PPE and training in its use
- Care home outreach provided by GFRS
- Fast track carers recruitment
- £7m to providers for Infection Control



# Response

## Protect the most vulnerable – Homeless

- Providing local leadership for 346 homeless over the lockdown period
- Received support for food and medication
- Assistance with drug and alcohol, mental health and other needs



# Response

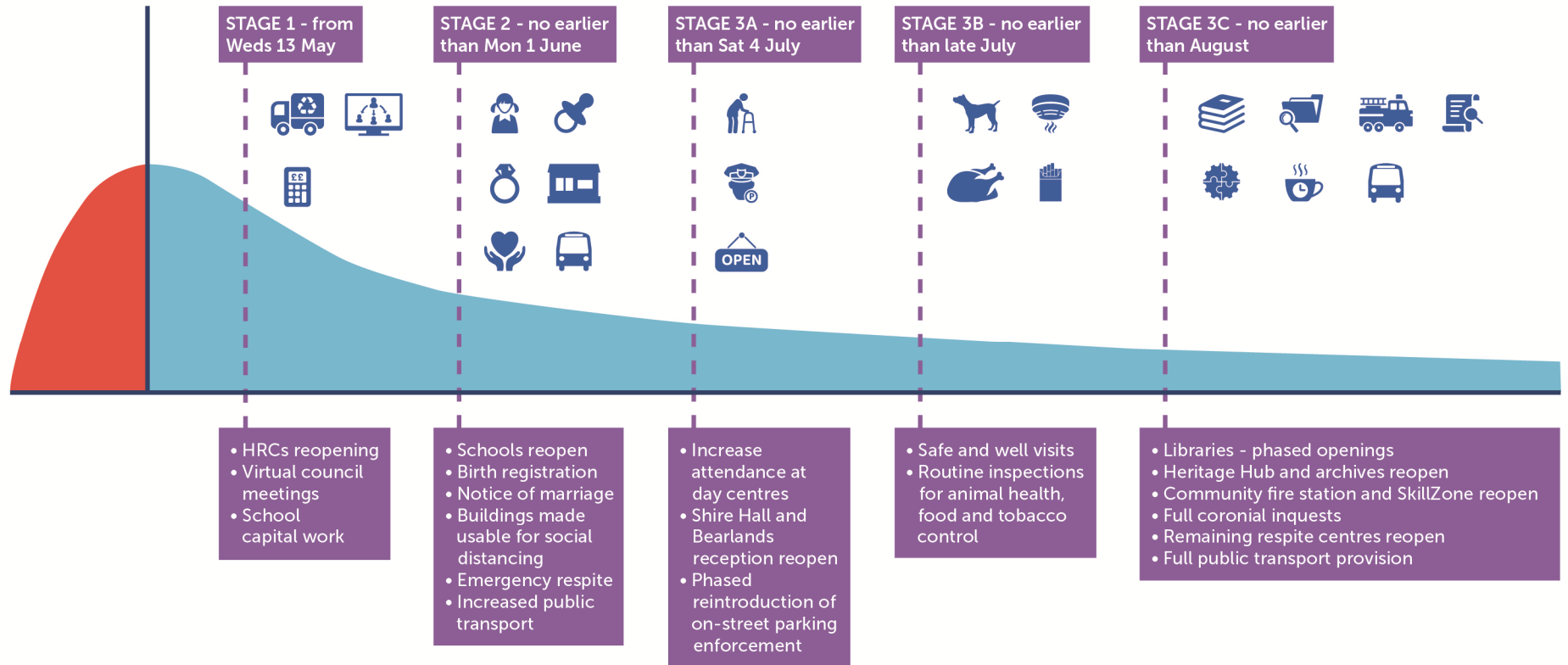
## Financial position

- Currently spending £3.4m per month
- Could rise to £53m for the full year
- 63% expected to be on Adult Social Care
- Govt have allocated £28m so far
- £7m grant received for infection control
- £300m (nationally) for test and trace
- Monthly delta returns to govt to keep them updated on expected spend on key issues



# Service Reinstatement

R more than 1 caseload increasing  
 R less than 1 caseload increasing



# Restart

## Service Reinstatement

- We are building reinstatement around govt 3 stages
- Supporting the use of walking and cycling across the county with district councils
- Responding to national changes, such as wedding and birth registrations



# Economic Recovery

## Key challenges and opportunities

- County Council working with other councils and the LEP
- Report and discussion taking place at Economic Growth Committee
- Difficult to currently predict where the pressure will come but currently working on medium and long term plans



Gloucestershire  
COUNTY COUNCIL