



Gloucestershire
COUNTY COUNCIL

MINUTES of meeting of the Cabinet

Held on WEDNESDAY 17 JUNE 2020

**PETER BUNGARD
CHIEF EXECUTIVE**

Minutes subject to their acceptance as a correct record at the next meeting

CABINET	Gloucestershire County Council
17 June 2020	

PRESENT:

Cllr Mark Hawthorne MBE	- Leader of Council
Cllr Richard Boyles	- Deputy Leader and Cabinet Member for Children's Safeguarding and Early Years
Cllr Carole Allaway Martin	- Cabinet Member: Adult Social Care Commissioning
Cllr Tim Harman	- Cabinet Member: Public Health and Communities
Cllr Patrick Molyneux	- Cabinet Member: Economy, Education and Skills
Cllr Nigel Moor	- Cabinet Member: Environment and Planning
Cllr David Norman MBE	- Cabinet Member Public Protection, Parking and Libraries
Cllr Vernon Smith	- Cabinet Member: Highways and Flood
Cllr Lynden Stowe	- Cabinet Member: Finance and Change
Cllr Kathy Williams	- Cabinet Member: Adult Social Care (Delivery)

1. Apologies

No apologies.

2. Minutes

The minutes of the meeting held on 11 March 2020 were confirmed and agreed as a correct record of that meeting.

3. Declarations of Interest

No declarations of interest.

4. Questions at Cabinet Meetings

11 public questions were submitted for consideration prior to the meeting, plus 33 member questions.

The responses to the questions were published on the council website on Tuesday 16 June 2020, (the day before the meeting), and can be viewed at the link below: -

<https://glostext.gloucestershire.gov.uk/ieListDocuments.aspx?MIId=9232&x=1>

The following supplementary questions were asked at the meeting:-

Public Questions:

Question 2. Mr Christopher Chiswell

Agenda item 9: West Cheltenham Transport Improvement Scheme

Mr Chiswell noted that the implemented schemes referred to in the answer to his question referred to pedestrian distancing, not active transport enablers. Mr Chiswell felt the response did not address the first part to his question and what Cllr Moor hoped to achieve to prevent a retrograde modal shift as people quite rightly, avoided using public transport.

Mr Chiswell asked, if the Council was committed to tackling the climate emergency, and noting the context of the ambitious and published* plans of many other local authorities across England, what measurable ambitions might Cllr Moor have for stimulating active transport as a specific mitigation to increased private vehicle use in the context of Covid-19?

Response by: Cllr Nigel Moor (Cabinet Member: Environment and Planning)

Cllr Moor informed Mr Chiswell that the Council was in contact with the 6 District Councils, all of whom had been asked to provide details of their respective schemes. Four trial schemes existed; (three in Cheltenham, Tewkesbury and Bourton on the Water, with a further site being developed in Gloucester). Each District Council had been asked to provide details of the priority sites for their areas. Cllr Moor stated that, as proposals developed, (on what he considered to be very ambitious schemes), he intended to work closely with the District Councils and would be looking at the proposals pro-actively.

Question 12. Molly Scott Cato (former Green MEP for South West England and Gibraltar)

Agenda item 5: Gloucestershire County Council (GCC) Covid-19 Response & Approach to Recovery

Reiterating her concerns, Molly Scott Cato asked, if the county had to make a rapid response to a local Covid-19 outbreak, who would make this decision, the Council or Public Health England? In the event of an outbreak in Gloucestershire, would the County Council take control and, if so, would it have the necessary data to make this decision?

Response by: Cllr Tim Harman (Cabinet Member for Public Health and Communities)

Referring to Council Motion 863 (Establishment of a local contact tracing system to stop Covid-19), submitted for consideration at the Council meeting on 24 June 2020, Cllr Harman agreed this was a very important issue, and one that would be

responded to using an integrated approach involving the County Council and its partner organisations.

Cllr Harman stated that, whilst consideration had been given to the setting up of a local contact tracing system in March 2020, Ceredigion County Council had a very small population in comparison to Gloucestershire. Contact tracing test result returns for Gloucestershire would be sent to regional PHE Centres. This would enable PHE to take a lead in investigating potential local coronavirus outbreaks, and for the council to manage the consequences of such. Cllr Harman confirmed that he would work with all groups when responding to decisions made by PHE.

Member Questions

Question 1: Cllr Jeremy Hilton

Agenda item 5: Gloucestershire County Council (GCC) Covid-19 Response & Approach to Recovery

Noting the numbers of people who had received assistance from the Integrated Brokerage Team when transferring from hospital to residential care homes in March, April and May 2020, Cllr Hilton questioned why transfers had continued following the government's lockdown announcement?

Response by: Cllr Carole Allaway-Martin (Cabinet Member for Adult Social Care: Commissioning)

Cllr Allaway-Martin acknowledged this was a complex issue, for which a 'Support to Care Homes during Covid-19' report would be presented to the Adult Social Care Scrutiny Committee at its meeting on 7 July 2020. The report provided details of the support provided to care homes during the initial response to the coronavirus emergency.

Question 2: Cllr Jeremy Hilton

Agenda item 5: Gloucestershire County Council (GCC) Covid-19 Response & Approach to Recovery

Cllr Hilton asked if a lack of testing for residential care home residents prior to their discharge from hospital might have contributed to some of the care home deaths in the county?

Response by: Cllr Carole Allaway- Martin (Cabinet Member for Adult Social Care: Commissioning)

Cllr Allaway-Martin stated that, in its response to the pandemic, the council had adhered to Public Health England guidelines and had responded to any updates as they emerged. Cllr Allaway-Martin agreed it would be good practice to conduct a retrospective study of the council's response to the pandemic, (including the significant number of updates received from Public Health England), but suggested

Minutes subject to their acceptance as a correct record at the next meeting

this should be at an appropriate time. In the meantime, more information would be presented at the county scrutiny committee meetings in July.

Question 3: Cllr Jeremy Hilton

Agenda item 5: Gloucestershire County Council (GCC) Covid-19 Response & Approach to Recovery

Cllr Hilton asked if a full independent inquiry would be held later in the year to investigate the number of deaths reported in care homes in Gloucestershire during the Covid-19 emergency period?

Response by: Cllr Carole Allaway-Martin (Cabinet Member: Adult Social Care: Commissioning)

Cllr Allaway-Martin agreed that, at the appropriate time, a significant number of questions would need to be asked on the county's response to the Covid 19 Pandemic. At the present time, however, it was important to concentrate on addressing the challenges of the emergency situation.

Referring to the Leader of Council's 'Covid-19 Response & Approach to Recovery Report' to the Adults Social Care and Communities Scrutiny Committee, Cllr Allaway-Martin believed the County Council and its partners had reacted responsibly and appropriately. A huge amount of work had been involved in responding to the emergency, including providing appropriate PPE (Personal Protective Equipment) and training to residential care homes and domiciliary care workers.

Cllr Allaway-Martin described the scrutiny report as a positive overview of the council's position going forward. She informed members that more information would be provided at the scrutiny committee meetings in July.

Question 5: Cllr Colin Hay

Reassured by the answers to his questions, Cllr Hay reiterated concerns about a possible increase in the number of children in care in Gloucestershire falling out of the education system due to the current coronavirus emergency. Cllr Hay stressed the importance of keeping the number of NEET children in care, (not in education, employment, or training, to a minimum and asked what the council and GFirst LEP was doing to ensure this?

Response by: Cllr Richard Boyles (Cabinet Member: Children's Safeguarding)

Cllr Boyles reaffirmed that the council's NEET team had been working closely with the Virtual School to provide online training services during the coronavirus emergency. In addition, both GFirst LEP and the council were committed to working together to prevent more young people falling into the NEET category. A bursary was being paid to enable young people to upskill themselves with on-line traineeships.

Minutes subject to their acceptance as a correct record at the next meeting

Cllr Boyles believed the council was working more closely with young people than before the emergency and said how pleasing it was to see a significant number of applications for employment. Cllr Boyles assured members that the council was continuing to work together with partner organisations to assist young people during the Covid-19 recovery period.

Question 6: Cllr Rachel Smith

Agenda items 9 and 10: West Cheltenham Transport Improvement/M5 Junction 10 Schemes

Cllr Smith requested more information on the carbon emission and air pollution modelling for the M5 Junction 10 Improvement Scheme (Agenda item 10) and asked if Cabinet could commit to the approval of funding to achieve a carbon neutral position for Gloucestershire/C02 reductions?

Response by: Cllr Nigel Moor (Cabinet Member: Environment and Planning)

Cllr Moor noted Cllr Smith's comments and advised that the council's mitigation plans for reducing carbon emissions would form part of the improvements. Mitigation would only commence during the advanced stages of negotiations for the scheme.

Question 7: Cllr Rachel Smith

Agenda items 9 and 10: West Cheltenham Transport Improvement/M5 Junction 10 Schemes

In relation to both schemes, (agenda items 9 and 10), Cllr Smith asked if potential long-term changes in transport demand arising from Covid-19 and similar scenarios (including the impact of people working from home), would be considered before Cabinet committed to spending millions of taxpayers money?

Response by: Cllr Nigel Moor (Cabinet Member: Environment and Planning)

Cllr Moor noted Cllr Smith's comments but said it was too early to predict long term results arising from the emergency. Although early days, Cllr Moor was optimistic that walking and cycling provision would be included in the scheme's proposals.

Question 8: Cllr Paul Hodgkinson

Agenda Item 5: Gloucestershire County Council (GCC) Covid-19 Response & Approach to Recovery

In relation to lessons learned, Cllr Hodgkinson asked whether the 600 Covid-19 related deaths in Gloucestershire had been a result of the council being misled by the government?

Response by: Cllr Mark Hawthorne (Leader of the Council)

Minutes subject to their acceptance as a correct record at the next meeting

Cllr Hawthorne referred to the potential risks from a second outbreak of the virus and said that the council's current focus was to support the ongoing work of developing an outbreak management plan. The Leader thanked officers for the tremendous amount of work that had been undertaken by Sarah Scott (Director of Public Health) and her team.

Question 9: Cllr Paul Hodgkinson

Agenda Item 5: Gloucestershire County Council (GCC) Covid-19 Response & Approach to Recovery

Cllr Hodgkinson referred to the huge number of lives lost to Covid-19 throughout Gloucestershire and the impact on the families who had lost loved ones to the pandemic? Cllr Hodgkinson asked the Leader of Council if he would join him to reflect on the profound impact this would have on the county.

Response by: Leader of the Council (Cllr Mark Hawthorne)

Cllr Hawthorne spoke at length on the impact the loss of life from the pandemic, of any life, had on the county. Cllr Hawthorne referred to the great sadness that had arisen from the loss of life in recent months but also of the tremendous admiration and respect for NHS workers and care workers who worked tirelessly to save lives during this difficult period. Cllr Hawthorne and Cllr Hodgkinson joined together to thank front line staff for their tremendous efforts in protecting local communities across Gloucestershire.

Question 10: Cllr Paul Hodgkinson

Agenda Item 5: Gloucestershire County Council (GCC) Covid-19 Response & Approach to Recovery

School transport – Section 3.3.2

Cllr Hodgkinson asked how much reimbursement costs parents were likely to receive to transport children to school.

Response by: Cllr Patrick Molyneux (Cabinet Member: Economy, Education and Skills)

Cllr Molyneux to ask officers to provide a written response to this question after the meeting.

Question 11: Cllr Paul Hodgkinson

Agenda Item 5: Gloucestershire County Council (GCC) Covid-19 Response & Approach to Recovery

School transport – Section 3.3.2

Minutes subject to their acceptance as a correct record at the next meeting

Cllr Hodgkinson asked what steps were being taken to encourage parents to change transport habits and arrangements for taking children to school.

Response by: Cllr Patrick Molyneux (Cabinet Member: Economy, Education and Skills)

Cllr Molyneux stated that the main priority at the moment was to get children back into school. The Covid-19 emergency had created lots of issues, including transport issues. Arrangements in the Autumn would be dependent upon announcements from the Government in relation to the number of pupils returning to school and social distancing measures. The key issue, at this present time, was to create a safe environment for children to return to school.

Question 12: Cllr Paul Hodgkinson

Agenda Item 5: Gloucestershire County Council (GCC) Covid-19 Response & Approach to Recovery

School transport – Section 3.3.2

Cllr Hodgkinson enquired into the split of children returning to school from rural/urban locations and the number of vehicles required to take children to school.

Response by: Cllr Patrick Molyneux (Cabinet Member: Economy, Education and Skills)

Cllr Molyneux stated that data from the Department of Education would determine the split.

Question 13: Cllr Paul Hodgkinson

Agenda Item 5: Gloucestershire County Council (GCC) Covid-19 Response & Approach to Recovery

Cheltenham Races

Cllr Hodgkinson asked Cllr Harman what was his understanding of the Government advice given at the time of the Cheltenham Festival and if any specific encouragement had been given to proceed with the Festival?

Response by: Cllr Tim Harman (Cabinet Member: Public Health and Communities)

Cllr Harman explained that at the time of the Festival, there had been no ban on mass gatherings. However, irrespective of media reports, the decision to hold the Festival was not in the remit of the County Council.

Question 14: Cllr Paul Hodgkinson

Agenda Item 5: Gloucestershire County Council (GCC) Covid-19 Response & Approach to Recovery

Cheltenham Races

Cllr Hodgkinson asked, in his role as cabinet member, whether Cllr Harman should have been consulted on the decision for the Cheltenham Festival to proceed at the time of the Covid-19 emergency announcement?

Response by: Cllr Tim Harman (Cabinet Member: Public Health and Communities)

Cllr Harman explained that the decision to proceed with the Cheltenham Festival in March had been made in accordance with the government position at that time. To have been consulted on the decision would have been beyond his and the council's remit.

Question 15: Cllr Paul Hodgkinson

Agenda Item 5: Gloucestershire County Council (GCC) Covid-19 Response & Approach to Recovery

Cheltenham Races

Cllr Hodgkinson asked, as Cabinet Member for Public Health, and in view of the government guidance at the time, whether Cllr Harman felt the Cheltenham Festival should have gone ahead?

Response by: Cllr Tim Harman (Cabinet Member: Public Health and Communities)

Cllr Harman did not feel his personal views were relevant to the decision. The decision had been made in accordance with government guidance at the time, and in line with public health policies.

Question 16: Cllr Paul Hodgkinson

Agenda Item 5: Gloucestershire County Council (GCC) Covid-19 Response & Approach to Recovery

Highways maintenance: Section 2.5

Making comparisons with Derbyshire and Stoke, Cllr Hodgkinson questioned why the number of pothole repairs for Gloucestershire had been lower than in other parts of the country, particularly when the roads had been so quiet.

Response by: Cllr Vernon Smith (Cabinet Member: Highways and Flood)

Unable to comment on the pothole repair work carried out in other parts of the country, Cllr Smith explained that carrying out highway maintenance work during such unprecedented times had been affected by supply chains and distribution. The

Minutes subject to their acceptance as a correct record at the next meeting

council was currently focussing on carrying out major resurfacing schemes as part of the council's £150m investment in the counties roads. Cllr Smith praised the Highways Team for working during such challenging times.

Question 18: Cllr Paul Hodkinson

Agenda Item 5: Gloucestershire County Council (GCC) Covid-19 Response & Approach to Recovery

Walking and Cycling Initiatives – Section 3.6

Cllr Hodgkinson asked if the opportunity to seize the moment by creating pop-up cycle lanes and preventing traffic levels from returning to normal had been missed and why had the council not acted as quickly as some other authorities to create cycle lanes?

Response by: Cllr Mark Hawthorne (Leader of the Council)

Cllr Hawthorne explained that the creation of pop up cycle lanes was a countywide piece of work, involving all 7 authorities. At an early stage, it had been agreed this was something the County Council was unable to act alone on. Despite initial enthusiasm, delays in submitting district plans had prevented the County Council from acting as quickly as it would have hoped.

Question 20: Cllr Iain Dobie

Agenda Item 5: Gloucestershire County Council (GCC) Covid-19 Response & Approach to Recovery

Track and trace - Section 3.7

Referencing the adoption of the German track and trace system in Wales, Cllr Dobie asked if the Gloucestershire Outbreak Management Plan proposed to change from a centralised approach to a more localised contact tracing system.

Response by: Cllr Tim Harman (Cabinet Member: Public Health and Communities)

Cllr Harman announced that the Gloucestershire Outbreak Management Plan was about to be published soon. Public Health England had been very involved in the preparation of the plan, for which Cllr Harman was pleased with the results and hopeful members would be reassured by the contents.

Question 21: Cllr Iain Dobie

Agenda Item 5: Gloucestershire County Council (GCC) Covid-19 Response & Approach to Recovery

Track and trace - Section 3.7

Cllr Dobie asked if the council was encouraging all care homes to take up the offer of staff having a Covid-19 test in order to beat the spread of the disease.

Response by: Cllr Tim Harman (Cabinet Member: Public Health and Communities)

Cllr Harman reiterated that the offer of testing was not mandatory. The council continued to work with, and had contacted all care homes in Gloucestershire to provide information on how to access the national portal for residents and staff at care homes to be tested.

Question 22: Cllr Iain Dobie

Agenda Item 5: Gloucestershire County Council (GCC) Covid-19 Response & Approach to Recovery

Track and trace - Section 3.7

Cllr Dobie referred to the number of tests being carried out in care homes and asked if Cllr Harman would encourage all care homes in Gloucestershire to test?

Response by: Cllr Tim Harman (Cabinet Member: Public Health and Communities)

Referring to how the data from testing might be used, Cllr Harman explained that the council could only use the data that was available. He suggested that consideration by the Health Overview and Scrutiny Committee might be a useful forum to seek advice and engage in detailed discussion.

Question 30: Cllr Iain Dobie

Agenda Item 5: Gloucestershire County Council (GCC) Covid-19 Response & Approach to Recovery

Walking and cycling – Section 3.6

Elaborating on his original question, Cllr Dobie sought clarity on accelerating the process of introducing emergency cycle-lanes and promoting additional travel schemes in Gloucestershire.

Response by: Cllr Nigel Moor (Cabinet Member: Environment and Planning)

Cllr Moor confirmed that, with the recent appointment of a dedicated officer and a range of schemes for the county, it was hoped there would be a significant improvement in the progression of schemes currently in progress. The key priority was to ensure the safety of cyclists.

5. Gloucestershire County Council (GCC) Covid-19 Response & Approach to Recovery

Cabinet received a presentation on the Council's response to the Covid-19 Emergency. The slide-show presentation presented at the meeting is attached for information.

Chief Executive, Pete Bungard, gave a detailed overview of the work of the County Council in response to the Coronavirus (Covid-19) Emergency and in the endeavour to protect the most vulnerable people across the County, including the homeless and people living in Care Homes.

Commending the work of officers, including employees from the Gloucestershire Fire and Rescue Service and the invaluable work of volunteer workers who have worked tirelessly to support local communities, the Chief Executive referred to the significant number of changes that had been made to coordinate and deliver council services in response to the Covid-19 Pandemic.

Members noted that, within hours of setting up Gloucestershire Help Hub, the Council had been flooded with offers of help from businesses, organisations and residents, totalling over 3,500 to date. Local communities throughout the County established their own support networks to protect the most vulnerable. Gloucestershire County Council staff rose to the challenge, with many staff changing/adopting new roles to support the Council's response, and many social services colleagues dramatically increasing hours of work to protect the most vulnerable residents. Volunteers from outside the Council responded to the thousands of calls seeking help and support, including delivering food parcels, collecting prescriptions and combatting isolation and loneliness.

Steve Mawson, Executive Director of Corporate Services, outlined the council's financial position in relation to the Gloucestershire response to the Covid-19 emergency. Details of expenditure incurred, plus details of the funding awarded by Government were provided.

It was reported that, (at the time of the meeting), the Council had spent £3.4m per month to cover the additional costs to deliver support services, (anticipated to rise to £53m for the full year, of which 63% would be required to providing Adult Social Care Services). For the same period, the Government had awarded £28m emergency funding to Gloucestershire, plus a £7m grant in respect of infection control. This was in addition to £300m (national funding) to fund test and trace. The council continues to provide monthly delta returns to keep the Government informed of anticipated expenditure on key issues. Officers remained confident that the Government was listening to the economic recovery needs of the County and that more funding would be made available.

Advising members of the various stages set out to commence the recovery process, officers confirmed that the County Council continued to encourage employees to work from home, (where possible), and was in the process of preparing the main council buildings to provide a safe (Covid-19) environment. The County Council would continue to work with its partners, including the GFirst LEP (Local Enterprise Partnership) to progress the Gloucestershire recovery

process. The Leader of the Council, Cllr Mark Hawthorne, stressed the need to work together to achieve this ambition.

Cabinet thanked officers for their work and commended the tremendous effort and work of volunteers, NHS and Care Workers in Gloucestershire. It was acknowledged that the Gloucestershire economy would undoubtedly experience a serious set back from the need to respond to the Covid-19 Pandemic and that the County Council, (working with District Council colleagues), would be required to take a lead in addressing the impact of the anticipated outcomes. Key areas of focus would be protecting jobs/creating jobs for young people, delivering planned infrastructure, (vital to development and employment), and the building of new homes.

Cllr Tim Harman, Cabinet for Public Health and Communities, reaffirmed his appreciation for the work undertaken in response to the Covid-19 emergency. Cllr Harman informed members how impressed he was by the work of officers and that it was a privilege to work with the Director of Public Health, Sarah Scott, and her team in responding to the pandemic.

Cabinet colleagues highlighted the work being undertaken within individual portfolio areas and acknowledged both the challenges and the opportunities that might be anticipated in the years ahead. Whilst the prospect of huge challenges were noted, the Leader reassured members that similar challenges in the past had been dealt with successfully.

Having considered the information, Cabinet

RESOLVED to: -

To note the report and the actions currently being undertaken in response to Covid-19.

The report included information on:

- 1. The role of the Council in responding to the Covid-19 pandemic and lockdown restrictions;*
- 2. A summary of the services that had stopped or reduced across the Council*
- 3. An outline of the initial recovery phase for the Council.*

6. Update to the Council Strategy: Looking to the Future 2019-2022

Leader of the Council, Cllr Mark Hawthorne, gave an update on proposed changes to the Council Strategy in response to the Council's declaration of a Climate Change Emergency in May 2019.

The current Council Strategy was agreed in February 2019, covering a three-year period from 2019 to 2022. During a debate at the 2020/21 council budget meeting in February 2020, a request was made to update the strategy to make reference to the Climate Change Emergency declared by the County Council in May 2019,

including the commitment to reduce Gloucestershire's carbon emissions by 80% by 2030, and secure a carbon neutral county by 2050.

Cabinet supported the request and agreed to update the strategy. The recommended changes, (outlined in the published decision report), to be referred to Full Council for adoption.

Having considered all of the information and the reasons for the recommendations, Cabinet noted the report and,

RESOLVED to: -

Recommend to Council that the updated Council Strategy be adopted, (the recommendation to be considered at the Gloucestershire County Council meeting on 24 June 2020).

7. Revenue & Capital Expenditure Outturn Report 2019-20

Cabinet received an update on the council's outturn expenditure for 2019/20 and proposed changes to the Capital Programme.

Cllr Lynden Stowe, Cabinet Member: Finance and Change reported a final year end position with an underspend of £0.326 million on a net revenue budget of £429.661 million. This underspend will be transferred to the council's General Reserves, (currently 4% above target).

Cabinet was advised that expenditure in response to the Covid-19 emergency had only been incurred at the latter end of the 2019/20 financial year. In total, £0.129 million of Covid-19 related expenditure was incurred. The financial impact of Covid-19, would continue to be monitored throughout 2020/21.

During 2019/20, the areas of major revenue risk related to the care of the most vulnerable children and adults in the county. These demand-led budget areas continued to be subject to significant volatility due to changes in client numbers and care needs and would need to be closely monitored and controlled in the 2020/21 financial year.

A total of £14.492 million savings were delivered in 2019/20, against a target of £19.051million, (76.1% of the annual target). £4.559 million of savings remained undelivered, representing 23.9% of the annual target. The most significant areas of savings not delivered in the 2019/20 budget year included £1.841 million in the Adults Single Programme and, due to continuing pressures on external placements, £1.700 million savings in the Children and Families Budget. Cllr Stowe confirmed the savings would be rolled forward to this financial year and reported alongside agreed MTFS savings targets for 2020/21

The re-profiled capital budget for 2019/20 totalled £110.950 million with expenditure of £88.461 million, (an in-year slippage of £22.489 million).

CLlr Stowed stated that this had involved slippage in some of the council's major schemes (as detailed in the Cabinet report) but that the schemes remained on budget and were expected to be completed during 2020/21

Having considered all of the information, including known proposals, alternative options and reasons for recommendations, Cabinet noted the report and,

RESOLVED to:

- 1) *Note the overall 2019/2020 revenue budget underspend of £0.326 million and approve the following transfers: -*

1.1 Transfer of £0.011 million to the Vulnerable Adults Reserve to use on 2020/21 projects and investments to supports the Adult Single Programme;

1.2 Provision of £1.575 million (being £1.050 million in Adults and £0.525 million in Prevention and Wellbeing) for refunds to service users where income was incorrectly collected from current and former residents receiving S117 'after care';

1.3 Provision of £0.456 million for backdated reimbursements to Shared Lives Carers in respect of Utility payments;

1.4 Carry forward of £0.151 million to 2020/21 to complete two year projects within Children's Services which were originally funded by additional "one off" budget allocations in 2017/18. The initial start of these projects was delayed.

1.5 Transfer of £0.352 million from the Active Communities Reserve.

1.6 Revenue transfer of £1.433 million to the Strategic Waste Reserve to fund the EFW (Energy from Waste) smoothing requirement;.

1.7 Revenue transfer of £0.393 million to the EE&I Reserve for the carry forward of Highways Local funding;

1.8 Revenue transfer £0.015 million of the surplus generated by Traded Services to the Traded Services Reserve;

1.9 Revenue transfer to the Transformation Reserve from Corporate Resources for the carry forward of £0.115 million to fund GDPR compliance initiatives.

1.10 Revenue transfer to the Transformation Reserve from Corporate Resources for the carry forward of £0.206 million to fund on going Covid-19 commitments.

1.11 Transfer £0.759 million to the Business Rates Retention Reserve in relation to the GCC share of the additional surplus on the 2019/20 Business

Minutes subject to their acceptance as a correct record at the next meeting

Rates Pool. In addition, to approve a transfer of £0.948 million to the Strategic Economic Development Fund also as a result of the Business Rates Pool;

1.12 Other technical reserve movements for 2019/20, as set out in Annex 1

2. Note delivery of the £14.492 million of savings against a target of £19.051 million in 2019/20 or 76.1%.

3. Note the capital budget position for 2019/20 is £88.461 million against a budget of £110.950 million, giving in year slippage of £22.489 million.

4. Changes to the Capital Programme totalling a net decrease of £1.187 million for 2019/20 and future years made up of:-

4.1. £0.055 million increase for Children and Families schemes funded by a transfer from the AMPS programme and a revenue contribution from AMPS.

4.2. £2.107 million net decrease in the Highway Capital programme reflecting a £2.950 million decreased in the capital receipts approval required for the LED replacement scheme, and additional funding of £0.618 million of developer and third party contributions and Highways Locals revenue contributions of £0.225 million.

4.3. £0.201 million increase in the Libraries capital budget funded from developer contributions

4.4. £0.039 million increase in the Trading Standards capital budget funded from a revenue contribution

4.5. £0.131 million increase in property works before sale, funded from capital receipts.

4.6. £0.025 million decrease in the AMPS capital budget, relating to the transfer to the Children & Families capital programme.

4.7. £0.519 million increase in the ICT capital budget funded from a revenue contribution.

8. Children & Families Capital Programme Update

Cabinet considered changes to the approved Children and Families Capital Programme.

Cllr Patrick Molyneux, Cabinet Member for Economy, Education and Skills, informed members that the County Council had approved the 2020/21 Children & Families Capital Programme at its meeting on 12 February 2020. The decision today provided an update, (including changes), to the various schemes within the programme.

With no changes to the Children and Families Budget, the schemes formed part of the council's ongoing commitment to investing £100 million into new schools, improving buildings and expansion of facilities at schools across Gloucestershire

Having considered the information, including known proposals, alternative options and reasons for recommendations, Cabinet noted the report and,

RESOLVED to:

Approve the following changes to the Children & Families Capital Programme (as set out in the report):

1. *A new scheme for the provision of additional places at Belmont Special School, funded by the transfer of £0.450million from the approved Basic Need Provision.*
2. *A new scheme for the provision of additional places at Battledown Children & Families Centre, funded by the transfer of £0.550 million from the approved Basic Need Provision.*
3. *A new scheme for the provision of additional places at Alderman Knight Special School, funded by the transfer of £1.400 million from the approved High Needs Specialist budgets and approved Basic Need Provision.*
4. *A new scheme for the provision of additional temporary places at Alderman Knight Special School, funded by the transfer of £0.500 from the approved Basic Need Provision.*
5. *A new scheme for the provision of additional places at Paternoster Special School, funded by the transfer of £0.075 million from the approved Basic Need Budget.*
6. *To return the £4.000 million previously agreed for additional primary provision in Winchcombe to the approved Basic Need Provision.*
7. *To return the £1.500 million previously allocated for additional primary provision in the Tidenham area to the approved Basic Need Provision.*
8. *An addition of £2.300 million to the approved scheme for The Cotswold School, funded from the approved Basic Need Provision.*
9. *An addition of £2.700 million to the approved scheme for Winchcombe Secondary School, funded from the approved Basic Need Provision.*
10. *An addition of £0.103 million developer S106 contribution for Fairford Primary to replace allocated basic need funding.*
11. *An addition of £0.288 million developer S106 contribution for Chipping Campden School.*

Minutes subject to their acceptance as a correct record at the next meeting

12. A reduction of £0.095 million School Condition Grant Allocation for 2020/21 to the Children and Families Capital Programme.

13. A new scheme for the delivery of accessibility schemes, funded by the transfer of £0.600 million from the approved Basic Need Provision.

9. West Cheltenham Transport Improvement Scheme; UK Cyber Business Park – Contract Procurement and Ancillary Orders Phases 3 & 4 and Walking and Cycling Improvements

Cabinet received a report on the West Cheltenham Transport Improvement Scheme.

On 9 June 2020, the GFirst LEP approved funding in respect of the West Cheltenham Transport Improvement Scheme (Phases 3 and 4) and to enable West Cheltenham Walking and Cycling Improvements. The County Council received £9.89 million funding to undertake a compliant tender process for delivery of the following works: -

- i) Cycle and pedestrian infrastructure improvements from Arle Court to Cheltenham Railway Station, including wider cycle improvements in the Benhall and St Marks area;
- ii) Arle Court to Gloucester Road/Lansdown Road junction eastbound carriageway improvements (towards Cheltenham Town Centre);
- iii) Telstar Way widening to Hubble Road;
- iv) Re-modelling and widening of Benhall Roundabout

Cllr Nigel Moor, Cabinet Member for Environment and Planning, informed members that the decision today was to seek authorisation to commence the tender and procurement process for the supply of design and construction services in relation to the proposed works.

Commending officers for maintaining the momentum during the recent Covid-19 emergency, Cabinet colleagues emphasised the importance of the scheme in providing huge opportunities for Gloucestershire.

Having considered the information, including known proposals, alternative options and reasons for recommendations, Cabinet noted the report and,

RESOLVED to:

To delegate authority to the Lead Commissioner, Highway Authority (in consultation with the Cabinet Member for Environment and Planning) to:

Minutes subject to their acceptance as a correct record at the next meeting

- 1. Conduct a competitive procurement process(es) for the supply of highway services and works relation to: (a) the West of Cheltenham Transport Improvement Scheme- UK Cyber Business Park Phases 3 & 4; and (b) the West Cheltenham Walking and Cycling Improvements; and award contract(s) for the provision of such services and works to the successful tenderer(s); and*
- 2. Make any other ancillary traffic regulation orders that might be required in order to successfully implement the Project (such as temporary traffic regulation orders (TTROs for speed limits etc) during the construction phase of the Project.*

10. M5 Junction 10 Improvement Scheme; Revenue budget approval and Homes England contract conditions agreement

Cllr Nigel Moor, Cabinet Member for Environment and Planning, gave an update on the M5 Junction 10 Improvement Scheme.

Cllr Moor confirmed that on 12 March 2020, the County Council had been successful in securing a Housing Infrastructure Bid of £219.8 million towards the M5 Junction 10 Improvement Scheme. The council had also received approval from the Department for Transport to proceed to the Strategic Outline Business Case Stage for the M5 J9/A46 Large Local Majors Scheme.

Promoting the immediate progression of both schemes, Cllr Moor informed members that to do so, further funding from the County Council would be required. He explained that, in relation to Junction 10, no draw down from the £219.8M capital funding could be made until the County Council had entered into a Grant Determination Agreement (GDA) with the Ministry for Housing, Communities, and Local Government (MHCLG). An ambitious timetable had been set out, seeking to sign the GDA in July 2020, followed by the drawing down of the first payment in August 2020.

Cllr Moor proposed that the County Council enter into a Grant Determination Agreement with Homes England, (together with any associated agreements and supporting documentation). He explained that, to do so, it would be necessary for Cabinet to provide funding for the period up to the contract signing and to the drawing down period.

Referring to the Junction 9 proposal, Cllr Moor stated that the Department of Transport had stipulated a clear priority order that the County Council work with local authorities on their respective bids. With this in mind, the County Council would be required to undertake further work on the County Council business case in order to keep to the deadline for the current Large Local Major Scheme.

Supported by the Leader and Cabinet colleagues, Cllr Moor stressed the importance of delivering major schemes for the county. He also commended the persistence of officers in progressing this important contribution to the local

Minutes subject to their acceptance as a correct record at the next meeting

infrastructure, particularly at this crucial time in the economic recovery of Gloucestershire.

Having considered the information, including known proposals, alternative options and reasons for recommendations, Cabinet noted the report and,

RESOLVED to:

1. *Agree to*

1.1 *Underwrite, at risk, an additional £2,150,000 to the 2020/21 revenue budget to cover the period of April 2020 to September 2020;*

1.2 *Underwrite, at risk, up to an additional £6,479,000 to the 2020/21 revenue budget to cover the period of October 2020 to March 2021 should there be a delay in signing the J10 GDA and to enable the J9 OBC to continue.;*

2. *Delegate authority to the Executive Director Economy, Environment and Infrastructure in consultation with the Cabinet Member; Environment and Planning and the Executive Director of Corporate Resources (and Section 151 Officer) to:*

3. *Agree the terms and conditions which give rise to the GDA between GCC and Homes England in relation the M5J10 scheme, including the Heads of Terms.*

4. *Authorise the County Council to execute the GDA between GCC and Homes England by affixing the council's seal thereto.*

5. *Authorise the execution of any supplemental documents or agreements necessary to facilitate the delivery of the M5J10 scheme.*

11. European Regional Development Fund Capital Funding for Gloucester Canal Towpath

Cllr Vernon Smith, Cabinet Member for Highways and Flood, sought cabinet approval to authorise the Executive Director of Economy, Environment & Infrastructure to enter into a European Regional Development Fund (ERDF) agreement with the Secretary of State for Housing, Communities and Local Government to undertake development works on the Gloucester & Sharpness Canal Towpath between Rea and Sellars Bridge, Gloucester.

Cllr Smith referred to the fantastic opportunities this phase of the development would bring to the local community. He emphasised how that the scheme would support the increased development between Gloucester and Hardwicke and the thriving outer city developments at Quedgeley and Kingsway. Significant additional growth was also anticipated at the new Hunts Grove Development, where it was

Minutes subject to their acceptance as a correct record at the next meeting

hoped new residents would be encouraged to travel into Gloucester using the towpath.

Cabinet colleagues welcomed the proposal and agreed that the upgrade supported the council's commitment to creating more sustainable travel arrangements for the county and in reducing CO2 emissions along a key transport route. Cllr Smith confirmed that this particular phase of the works included biodiversity enhancements to support habitat creation and that many residents were delighted by the scheme.

Having considered the information, including known proposals, alternative options and reasons for recommendations, Cabinet noted the report and,

RESOLVED to:

Delegate authority to the Executive Director of Economy, Environment & Infrastructure to:

- i) Enter into an ERDF capital funding agreement with the Secretary of State for Housing, Communities and Local Government for the purpose of funding works in connection with the proposed Gloucestershire Canal Towpaths Upgrade.*
- ii) Enter into a funding agreement with the Canal & River Trust (CRT) in order to fund works to be carried out by CRT's term contractor Kier with effect from September 2020 on CRT's land between Elmore Lane West and Haywicks Lane.*

12. Recommendation to Council - Second Review of the Statement of Community Involvement (SCI) for Gloucestershire

Cllr Nigel Moor, Cabinet Member for Environment and Planning, sought cabinet approval to make a recommendation to Council to adopt the 2nd Review Statement of Community Involvement for Gloucestershire. Cllr Moor informed members that, in accordance with the Planning and Compulsory Purchase Act 2004, (as amended), the County Council, (as local planning authority), was required to produce a Statement of Community Involvement (SCI). The Town and Country Planning (England) (Local Planning) Regulations 2012 regulated how the statement should be set out. Amended in 2018, the regulations now included a mandatory 5-year review cycle.

A review of the SCI adopted in 2013 was undertaken in 2019. The updated 2nd Review Statement of Community Involvement was presented to the Gloucestershire County Council (GCC) Planning Committee in Autumn 2019 and underwent a period of public scrutiny.

Cllr Moor drew attention to some of the main changes to the document. These included: -

Minutes subject to their acceptance as a correct record at the next meeting

- i) Reference to legislative reforms, with particular reference to the protection of personal data;
- ii) Clearer reference to the County Council's potential planning role in relation to minerals and waste matters;
- iii) Greater recognition of alternative and more effective consultation methods, including use of social media;
- iv) Greater awareness of the use of resources and the need to support the decarbonisation agenda (including the stopping of using hard copy consultation materials being made available for every event at all libraries across the county – a saving of around 1 tonne of CO₂ per event); and
- v) Acknowledgement of new local guidance on consultations and notifications for larger-scale and potentially more impactful developments

The new 2nd Review SCI includes a number of temporary measures to avoid conflict with Cabinet Office Coronavirus guidance.

Having considered the information, including known proposals, alternative options and reasons for recommendations, Cabinet noted the report and,

RESOLVED to

Make a recommendation to Council that: -

The 2nd Review Statement of Community Involvement for Gloucestershire be adopted in accordance with Section 23 of the Planning and Compulsory Purchase Act 2004 (as amended)

Leader of Council

Meeting concluded at 12.00 pm

Covid-19 Response and Approach to Recovery

Cabinet 17th June 2020

Response

Protect the most vulnerable – Adult Social Care

- 10% supplier relief to all providers
- Adequate PPE and training in its use
- Care home outreach provided by GFRS
- Fast track carers recruitment
- £7m to providers for Infection Control

Response

Protect the most vulnerable – Homeless

- Providing local leadership for 346 homeless over the lockdown period
- Received support for food and medication
- Assistance with drug and alcohol, mental health and other needs

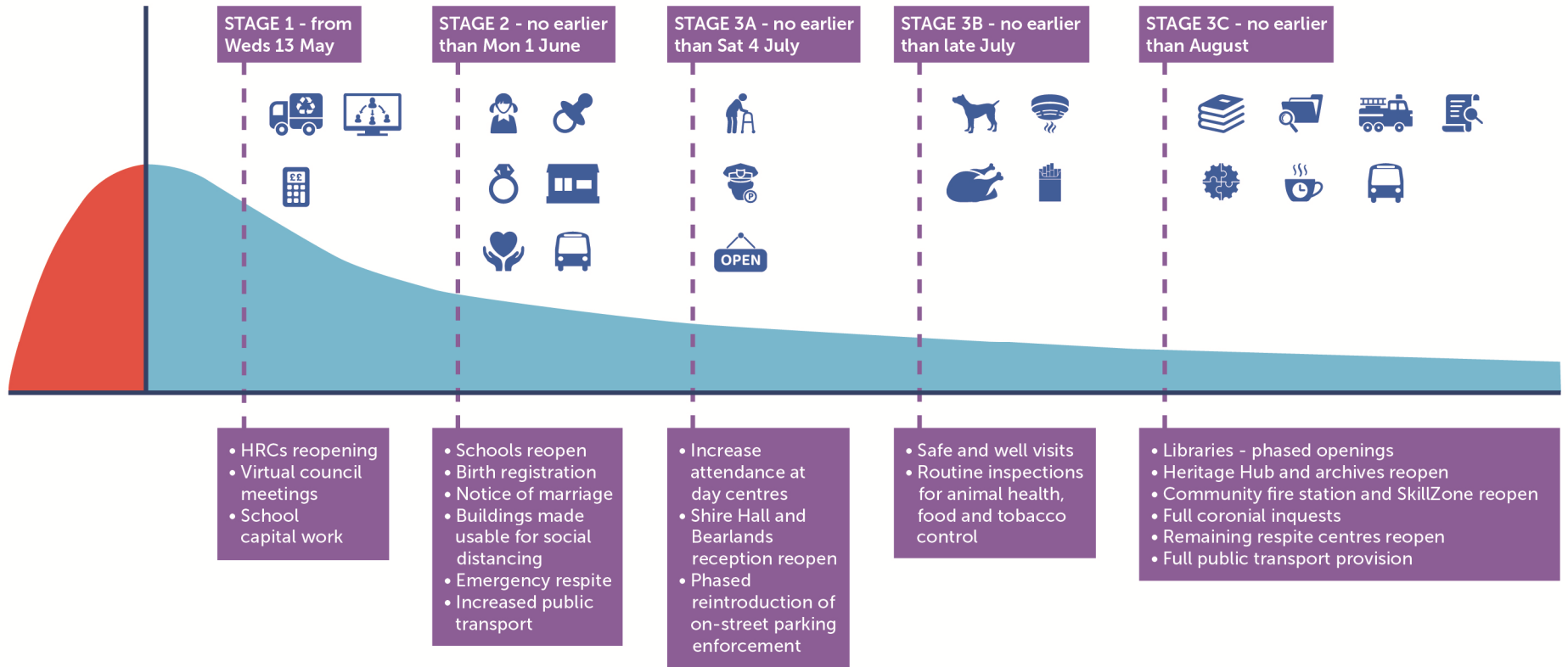
Response

Financial position

- Currently spending £3.4m per month
- Could rise to £53m for the full year
- 63% expected to be on Adult Social Care
- Govt have allocated £28m so far
- £7m grant received for infection control
- £300m (nationally) for test and trace
- Monthly delta returns to govt to keep them updated on expected spend on key issues

Service Reinstatement

R more than 1 caseload increasing
 R less than 1 caseload increasing



Restart

Service Reinstatement

- We are building reinstatement around govt 3 stages
- Supporting the use of walking and cycling across the county with district councils
- Responding to national changes, such as wedding and birth registrations

Economic Recovery

Key challenges and opportunities

- County Council working with other councils and the LEP
- Report and discussion taking place at Economic Growth Committee
- Difficult to currently predict where the pressure will come but currently working on medium and long term plans

This page is intentionally left blank