

Children and Families Overview and Scrutiny Committee

Thursday 14 September 2023 at 10.00 am

Council Chamber - Shire Hall, Gloucester



Supplement

10 REVENUE MONITORING REPORT (Pages 1 - 10)

Ann James

To note the attached Revenue Monitoring Report.

Membership – *Cllr Linda Cohen (Vice-Chair), Cllr Dr David Drew, Cllr Ben Evans, Cllr Beki Hoyland, Cllr Mark Mackenzie-Charrington, Cllr Paul McLain, Cllr Dr Andrew Miller (Chair), Cllr Emma Nelson and Cllr Kathy Williams Ambassador for Vulnerable Children and Young People*

This page is intentionally left blank


REPORT TITLE: Revenue Monitoring Report for Children's Services 2023/24

| | |
|--|---|
| Scrutiny meeting | Children & Families Overview and Scrutiny Committee - 14 th September 2023 |
| Chair | Cllr Dr Andrew Miller |
| Presenting Officer | |
| Item Type | Overview and Scrutiny of the financial forecast position for July 2023 |
| Purpose of Report | To provide the forecast outturn figures for the 2023/24 revenue budgets based on the July 2023 forecast. |
| Recommendations / Action sought | No recommendations included in the report. |
| Forthcoming Decisions | Not applicable |
| Background Documents | This is the first forecast revenue report to the committee in 2023/24 |
| Appendices | <ul style="list-style-type: none"> • Attachment 1 – Net Budget (Forecast Outturn) Children & Families • Attachment 2 – Net Budget (Forecast Outturn) – High Risk Analysis • Attachment 3 – Activity Analysis – External Placements |
| Contact Information | Suzanne Hall, Finance Business Partner, Tele. No. 01452 328937 |

1. Introduction

The structure of the report reflects the commissioning view of children and families services. Services are grouped by Service Areas with DSG (Dedicated Schools Grant) and non-DSG variances identified.

DSG is the grant allocated by the Department for Education to fund all education services including schools and the total for Gloucestershire is over £589 million. Of this total, £453 million is delegated to schools and academies with the remainder relating to early years, high needs and a small number of central support services which are the responsibility of the Local Authority. High needs includes the funding for special schools, pupil referral service, additional SEN support for pupils in mainstream schools and post 16 support to colleges.

2. Executive Summary

2.1 Overall Position

The underlying forecast revenue position as at July 2023 for non-DSG funded services is an over-spend of £11.17 million (7.1% of budget) but £6.2 million of this will be covered by the Children's Reserve giving a reported over-spend position of £4.97 million. External placements continue to be the most significant and enduring variance and other over-spends include disability services, commissioning activities and safeguarding staff costs.

Gloucestershire's number and rate of children in care (67 per 10,000 children in care (April 23)) is above the peer group average (59) but below the England average (70) based on the most recent published data (March 2022). Children in care activity at the end of June was 858, below the average of 2022/23 of 866.

The Dedicated Schools Grant (DSG) carry forward from 2022/23 was £28.58 million and included the high needs block at £30.85 million offset by early years and school balances. In setting the high needs budget for 2023/24, current trends have been reviewed to identify what a realistic budget would be, to reflect existing activity demands and growth trends in special school and independent provision and top up budgets. The modelling has identified a deficit budget of £12.82 million for 2023/24 with a further in-year pressure of £560k.

This position is analysed in the monitoring spreadsheet provided at attachment 1 to this report, based on actual expenditure to the end of June 2023 and forecasts input in July 2023.

2.2 Variance Summary

The major variances for non-DSG, with summary explanations are:

- **Children in Care** – the current forecast over-spend against the external placement budget is £7.558 million (16.9% above budget), but this is the net position after forecast mitigations of £8 million have been taken into account. The gross expenditure forecast at the start of the year has reduced by £3.1 million due to the work across commissioning and operations to reduce costs. The overspend is due to the numbers of children in care and the cost of placements due to limited market availability, both of which are national issues. The placement variance is due to the number and cost of residential placements, support packages for young people and the cost of supported living placements. Within the overall position, the five most complex placements are forecast to cost over £6 million in 2023/24. At the end of June, there were 436 external placements, of which 111 were residential and 124 supported living placements.
- **Safeguarding** – against safeguarding staffing budgets there is a forecast over-spend of £609k (2.7% above budget). Turnover of staff has reduced over the last six months and has been between 20.9% and 17.1%. Agency staffing levels remain a challenge and at the end of June there were 128 agency workers in post across social care services compared to 85 agency workers in August 2021. Allocating newly qualified staff into established posts after their first six months of experience will reduce the number of agency workers as well as tighter management of agency approvals in line with case numbers in teams.

- **Services Disabled CYP** - are forecasting to over-spend by £1.465 million due to the cost of care packages, including s.76 contracts with Health, and disability service staffing costs.
- **Commissioning** - the over-spend forecast within the Commissioning hub of £770k reflects the capacity required to support the extensive agenda to develop services through a combination of capital projects and redesigned of services.

The major variances for DSG include:

- **Schools** – the deficit carry forward is £28.58 million with the high needs block being £30.85m. A further pressure of £560k has been identified in-year, due to secondary top-ups and education support outside school.
- **Education Outcomes and Intervention** – the deficit budget that was set for the high needs block totals £12.82 million and is included under this heading.

Gloucestershire's High Needs block, like most local authorities nationally, is in deficit. The increase in the allocated funding for 2023/24 of an additional £8.782 million has only partly offset the forecast demand pressures for additional special school places and to provide support to mainstream schools. The additional funding in the MTFs 23/24 to provide additional capacity within SEND teams will seek to reduce the pressure on the budget as well. The DfE programme, 'Delivering Better Value,' has reviewed Local Authority expenditure on SEND, assessed local processes and plans, carried out data analysis to identify the cost drivers and the causes for the pressure on budgets. The programme will result in an application for a grant to take forward actions to implement improvements to manage the use of DSG.

2.3 Other Key Financial Information

The senior leadership team continues to meet on a weekly basis to review the budget recovery position overseeing, in turn, the dedicated team within commissioning focused on providing support and challenge to the management of external placements.

Further impetus is being provided by a Financial Recovery Oversight Group comprising of the Council Leader, Chief Executive and Section 151 Officer, along with children's services senior leadership. The financial recovery strategy aligns with the improvement strategy by focussing on early intervention to avoid the need for a costly social care response and bringing the child in care population more in line with statistical neighbours over the coming years. This involves a range of workstreams, each with a designated lead, which aim to impact on both numbers and associated costs, including:

- Further developing our edge of care offer to support children at home and avoid entry into care, linking with youth support and early help teams.
- Continuing to develop our permanence planning to reduce drift and delay by achieving permanence or reunification as appropriate in a timely manner.
- Reviewing the entire children in care population to ensure care packages continue to reflect needs, ensuring value for money and taking advantage of where costs can be reduced while continuing to deliver the right outcomes for the young person. This will include work with partners around their contributions.
- Reviewing all post 18 placements (including unaccompanied asylum seekers) to ensure all support and accommodation costs are appropriate and value for money.
- Transformation of the in-house fostering service to drive up capacity, improve matching and increase family/connected carers.

- Continuing to develop our own placement capacity with providers to exert a greater influence on the market and control costs.
- Detailed review of staffing establishment, supply lines for practitioners and use of agency workers.

3. Detailed Analysis

An analysis of the financial figures is contained in the following attachments:

- Attachment 1 – Net Budget (Forecast Outturn) Children & Families
- Attachment 2 – Net Budget (Forecast Outturn) – High Risk Analysis
- Attachment 3 – Activity Analysis – External Placements

2023/24 Revenue Budget Monitoring Report - ATTACHMENT 1
Children & Families
Net Budget Analysis
Year-End Forecast input in July 2023

| Service Area | Budget Manager | Full Year Budget £000 | Forecast £000 | Variance | | | |
|--|-------------------------|--------------------------|------------------|-----------------|-------------------------|-------------------|---------------|
| | | | | DSG £000 | Non DSG £000 | Total £000 | % |
| Services for CYP | | £000 | £000 | DSG £000 | Non DSG £000 | Total £000 | % |
| <u>Education & Additional Needs</u> | Kirsten Harrison | | | | | | |
| Schools | | -58,568 | -28,051 | 30,518 | -1 | 30,517 | -52.1% |
| Services for CYP with Additional Needs | | 31,351 | 31,742 | 136 | 255 | 391 | 1.2% |
| Education Outcomes and Intervention | | -3,757 | 9,158 | 12,973 | -58 | 12,915 | -343.8% |
| Education Planning & Infrastructure | | 21,162 | 21,150 | -11 | -1 | -12 | -0.1% |
| Early Years Education | | 36,096 | 36,097 | 1 | 0 | 1 | 0.0% |
| Other Education Services | | 1,022 | 1,119 | -1 | 98 | 97 | 9.5% |
| Total Education & Additional Needs | | 27,306 | 71,215 | 43,616 | 293 | 43,909 | 160.8% |
| <u>Children & Families</u> | Ann James | | | | | | |
| Safeguarding | | 24,667 | 25,276 | 0 | 609 | 609 | 2.5% |
| Children in Care | | 46,509 | 54,193 | 0 | 7,684 | 7,684 | 9.9% |
| Regulated Services | | 22,052 | 21,872 | 0 | -180 | -180 | -0.8% |
| Quality | | 2,606 | 2,621 | 0 | 15 | 15 | 0.6% |
| CF Management & Business Support | | 6,394 | 6,430 | 0 | 36 | 36 | 0.6% |
| Localities Coordination & Support | | 4,773 | 4,741 | 0 | -32 | -32 | -0.7% |
| Young People Services | | 4,223 | 4,601 | 0 | 378 | 378 | 9.0% |
| Disabled Children & Young People | | 5,061 | 6,526 | 0 | 1,465 | 1,465 | 28.9% |
| Total Children & Families | | 116,285 | 126,260 | 0 | 9,975 | 9,975 | 5.9% |
| <u>Commissioned Children's Services</u> | Rob England | | | | | | |
| Young People Support | | 4,963 | 4,963 | 0 | 0 | 0 | 0.0% |
| Commissioning of Intervention Services | | 2,996 | 2,996 | 0 | 0 | 0 | 0.0% |
| Health Contracts | | -912 | -912 | 0 | 0 | 0 | 0.0% |
| Commissioned Early Years Services | | 4,728 | 4,861 | 0 | 133 | 133 | 2.8% |
| Other Commissioned Children's Services | | 11,775 | 11,908 | 0 | 133 | 133 | 1.1% |
| Commissioning Function | Rob England | 2,163 | 2,933 | 0 | 770 | 770 | 35.6% |
| Roundings | | 0 | -1 | 0 | -1 | -1 | |
| Total | | 157,529 | 212,315 | 43,616 | 11,170 | 54,786 | 34.8% |

NOTE: The financial position is before the reserve of £6.2 million is applied

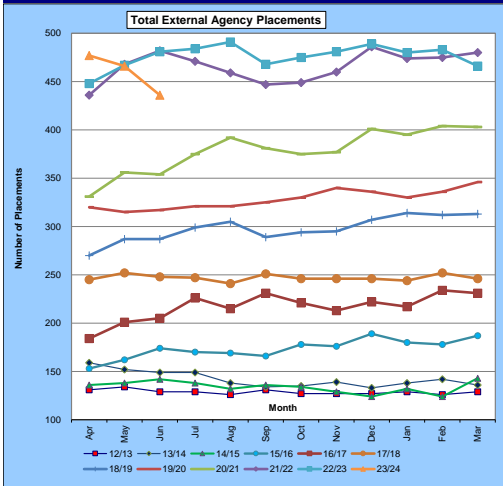
This page is intentionally left blank

2023/24 Revenue Budget Monitoring Report - ATTACHMENT 2
Children & Families Services
High Risk Analysis
Year-End Forecast input in July 2023

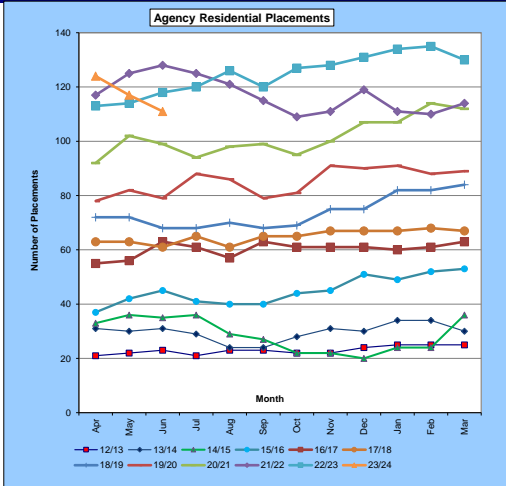
| Service Area | Budget Manager | Full Year Budget | Forecast | Variance | | | |
|---|----------------------|------------------|----------------|-----------------|---------------------|-------------------|--------------|
| | | | | DSG £000 | Non DSG £000 | Total £000 | % |
| High Risk Areas | | £000 | £000 | DSG £000 | Non DSG £000 | Total £000 | % |
| External Placements | Rob England | 44,809 | 52,367 | 0 | 7,558 | 7,558 | 16.9% |
| DCYP Care Packages | Sue Hall/Rob England | 2,096 | 3,304 | 0 | 1,208 | 1,208 | 57.6% |
| Independent Special Schools | Amanda Henderson | 19,424 | 19,435 | 11 | 0 | 11 | 0.1% |
| Fostering | Tammy Wheatley | 14,284 | 13,956 | 0 | -328 | -328 | -2.3% |
| <i>Fostering - Staff</i> | | 4,518 | 4,419 | 0 | -99 | -99 | -2.2% |
| <i>Fostering - Payments</i> | | 9,766 | 9,537 | 0 | -229 | -229 | -2.3% |
| Adoption | Tammy Wheatley | 2,799 | 2,850 | 0 | 51 | 51 | 1.8% |
| Special Guard & Res Orders | Tammy Wheatley | 4,969 | 5,067 | 0 | 98 | 98 | 2.0% |
| Safeguarding Staff | Ann James | 22,400 | 23,009 | 0 | 609 | 609 | 2.7% |
| Section 17 & Discretionary Payments | Various | 1,009 | 1,010 | 0 | 1 | 1 | 0.1% |
| <i>Discretionary Payments</i> | | 599 | 600 | 0 | 1 | 1 | 0.2% |
| <i>Section 17 Payments</i> | | 410 | 410 | 0 | 0 | 0 | 0.0% |
| High Needs Top-up Budgets | Amanda Henderson | 48,848 | 49,013 | 165 | 0 | 165 | 0.3% |
| Pensions | Philip Haslett | 3,586 | 3,586 | 0 | 0 | 0 | 0.0% |
| Youth Support - Leaving Care / After Care | Mark Bone | 4,223 | 4,602 | 0 | 379 | 379 | 9.0% |
| <i>Staffing</i> | | 3,268 | 3,672 | 0 | 404 | 404 | 12.4% |
| <i>Payments</i> | | 931 | 905 | 0 | -26 | -26 | -2.8% |
| <i>Unaccompanied Asylum Seekers</i> | | 24 | 25 | 0 | 1 | 1 | 4.2% |
| Transport | Clare Medland | 19,775 | 19,775 | 0 | 0 | 0 | 0.0% |
| Nursery Education Fees | Sarah Hylton | 36,096 | 36,097 | 1 | 0 | 1 | 0.0% |
| Roundings | | 0 | -3 | 0 | -3 | -3 | |
| Total | | 224,318 | 234,068 | 177 | 9,573 | 9,750 | 4.3% |

This page is intentionally left blank

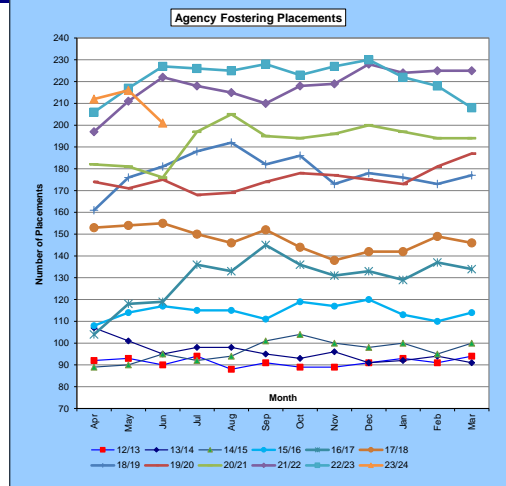
2023/24 Revenue Budget Monitoring Report
Children & Young People's Services
Activity Analysis - External Placements



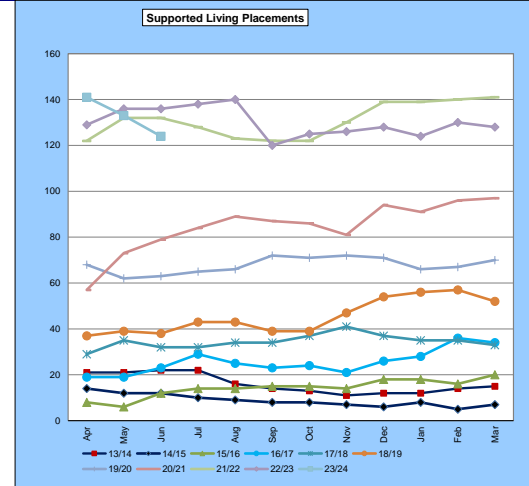
| Mth | 12/13 | 13/14 | 14/15 | 15/16 | 16/17 | 17/18 | 18/19 | 19/20 | 20/21 | 21/22 | 22/23 | 23/24 |
|-------|-------|-------|-------|-------|-------|-------|-------|-------|-------|-------|-------|-------|
| Apr | 131 | 159 | 136 | 153 | 184 | 245 | 270 | 320 | 331 | 436 | 448 | 477 |
| May | 134 | 152 | 138 | 162 | 201 | 252 | 287 | 315 | 356 | 468 | 467 | 466 |
| Jun | 129 | 149 | 142 | 174 | 205 | 248 | 287 | 317 | 354 | 482 | 481 | 436 |
| Jul | 129 | 149 | 138 | 170 | 226 | 247 | 299 | 321 | 375 | 471 | 484 | |
| Aug | 126 | 138 | 132 | 169 | 215 | 241 | 305 | 321 | 392 | 459 | 491 | |
| Sep | 131 | 134 | 136 | 166 | 231 | 251 | 289 | 325 | 381 | 447 | 468 | |
| Oct | 127 | 135 | 134 | 178 | 221 | 246 | 294 | 330 | 375 | 449 | 475 | |
| Nov | 127 | 139 | 129 | 176 | 213 | 246 | 295 | 340 | 377 | 460 | 481 | |
| Dec | 127 | 133 | 124 | 189 | 222 | 246 | 307 | 336 | 401 | 486 | 489 | |
| Jan | 129 | 138 | 132 | 180 | 217 | 244 | 314 | 330 | 395 | 474 | 480 | |
| Feb | 126 | 142 | 124 | 178 | 234 | 252 | 312 | 336 | 404 | 475 | 483 | |
| Mar | 129 | 136 | 143 | 187 | 231 | 246 | 313 | 346 | 403 | 480 | 466 | |
| Avert | 129 | 142 | 134 | 174 | 217 | 247 | 298 | 328 | 379 | 466 | 476 | 460 |



| Mth | 12/13 | 13/14 | 14/15 | 15/16 | 16/17 | 17/18 | 18/19 | 19/20 | 20/21 | 21/22 | 22/23 | 23/24 |
|-------|-------|-------|-------|-------|-------|-------|-------|-------|-------|-------|-------|-------|
| Apr | 21 | 31 | 33 | 37 | 55 | 63 | 72 | 78 | 92 | 117 | 113 | 124 |
| May | 22 | 30 | 36 | 42 | 56 | 63 | 72 | 82 | 102 | 125 | 114 | 117 |
| Jun | 23 | 31 | 35 | 45 | 63 | 61 | 68 | 79 | 99 | 125 | 118 | 111 |
| Jul | 21 | 29 | 36 | 41 | 61 | 65 | 68 | 88 | 94 | 125 | 120 | |
| Aug | 23 | 24 | 29 | 40 | 57 | 61 | 70 | 86 | 98 | 121 | 126 | |
| Sep | 23 | 24 | 27 | 40 | 63 | 65 | 68 | 79 | 99 | 115 | 120 | |
| Oct | 22 | 28 | 22 | 44 | 61 | 65 | 69 | 81 | 95 | 109 | 127 | |
| Nov | 22 | 31 | 22 | 45 | 61 | 67 | 75 | 91 | 100 | 111 | 128 | |
| Dec | 24 | 30 | 20 | 51 | 61 | 67 | 75 | 90 | 107 | 119 | 131 | |
| Jan | 25 | 34 | 24 | 49 | 60 | 67 | 82 | 91 | 107 | 111 | 134 | |
| Feb | 25 | 34 | 24 | 52 | 61 | 68 | 82 | 88 | 114 | 110 | 135 | |
| Mar | 25 | 30 | 36 | 53 | 63 | 67 | 84 | 89 | 112 | 114 | 130 | |
| Avert | 23 | 30 | 29 | 45 | 60 | 65 | 74 | 85 | 102 | 117 | 125 | |



| Mth | 12/13 | 13/14 | 14/15 | 15/16 | 16/17 | 17/18 | 18/19 | 19/20 | 20/21 | 21/22 | 22/23 | 23/24 |
|-------|-------|-------|-------|-------|-------|-------|-------|-------|-------|-------|-------|-------|
| Apr | 92 | 107 | 89 | 108 | 104 | 153 | 161 | 174 | 182 | 197 | 206 | 212 |
| May | 93 | 101 | 90 | 114 | 118 | 154 | 176 | 171 | 181 | 211 | 217 | 216 |
| Jun | 90 | 95 | 95 | 117 | 119 | 155 | 181 | 175 | 176 | 222 | 227 | 201 |
| Jul | 94 | 98 | 92 | 115 | 136 | 150 | 188 | 168 | 197 | 218 | 226 | |
| Aug | 88 | 98 | 94 | 115 | 133 | 146 | 192 | 169 | 205 | 215 | 225 | |
| Sep | 91 | 95 | 101 | 111 | 145 | 152 | 182 | 174 | 195 | 210 | 228 | |
| Oct | 89 | 93 | 104 | 119 | 136 | 144 | 186 | 178 | 194 | 218 | 223 | |
| Nov | 89 | 96 | 100 | 117 | 131 | 138 | 173 | 177 | 196 | 219 | 227 | |
| Dec | 91 | 91 | 98 | 120 | 133 | 142 | 178 | 175 | 200 | 228 | 230 | |
| Jan | 93 | 92 | 100 | 113 | 129 | 142 | 176 | 173 | 197 | 224 | 222 | |
| Feb | 91 | 94 | 95 | 110 | 137 | 149 | 173 | 181 | 194 | 225 | 218 | |
| Mar | 94 | 91 | 100 | 114 | 134 | 146 | 177 | 187 | 194 | 225 | 208 | |
| Avert | 91 | 96 | 97 | 114 | 130 | 148 | 179 | 175 | 193 | 218 | 221 | |



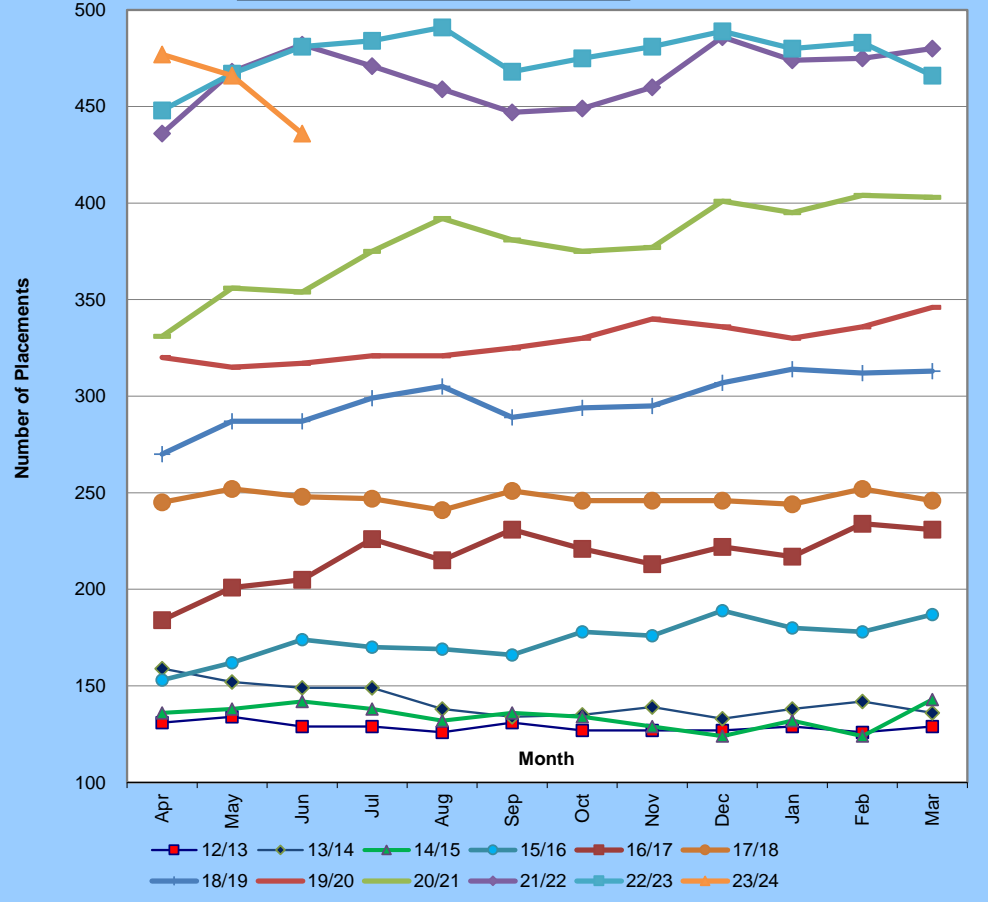
| Mth | 13/14 | 14/15 | 15/16 | 16/17 | 17/18 | 18/19 | 19/20 | 20/21 | 21/22 | 22/23 | 23/24 |
|-------|-------|-------|-------|-------|-------|-------|-------|-------|-------|-------|-------|
| Apr | 21 | 14 | 8 | 19 | 29 | 37 | 68 | 57 | 122 | 129 | 141 |
| May | 21 | 12 | 6 | 19 | 35 | 39 | 62 | 73 | 132 | 136 | 133 |
| Jun | 22 | 12 | 12 | 23 | 32 | 38 | 63 | 79 | 132 | 136 | 124 |
| Jul | 22 | 10 | 14 | 29 | 32 | 43 | 65 | 84 | 128 | 138 | |
| Aug | 16 | 9 | 14 | 25 | 34 | 43 | 66 | 89 | 123 | 140 | |
| Sep | 14 | 8 | 15 | 23 | 34 | 39 | 72 | 87 | 122 | 120 | |
| Oct | 13 | 8 | 15 | 24 | 37 | 39 | 71 | 86 | 122 | 125 | |
| Nov | 11 | 7 | 14 | 21 | 41 | 47 | 72 | 81 | 130 | 126 | |
| Dec | 12 | 6 | 18 | 26 | 37 | 54 | 71 | 94 | 139 | 128 | |
| Jan | 12 | 8 | 18 | 28 | 35 | 56 | 66 | 91 | 139 | 124 | |
| Feb | 14 | 5 | 16 | 36 | 35 | 57 | 67 | 96 | 140 | 130 | |
| Mar | 15 | 7 | 20 | 34 | 33 | 52 | 70 | 97 | 141 | 128 | |
| Avert | 16 | 9 | 14 | 26 | 35 | 45 | 68 | 85 | 131 | 130 | |

Page 9

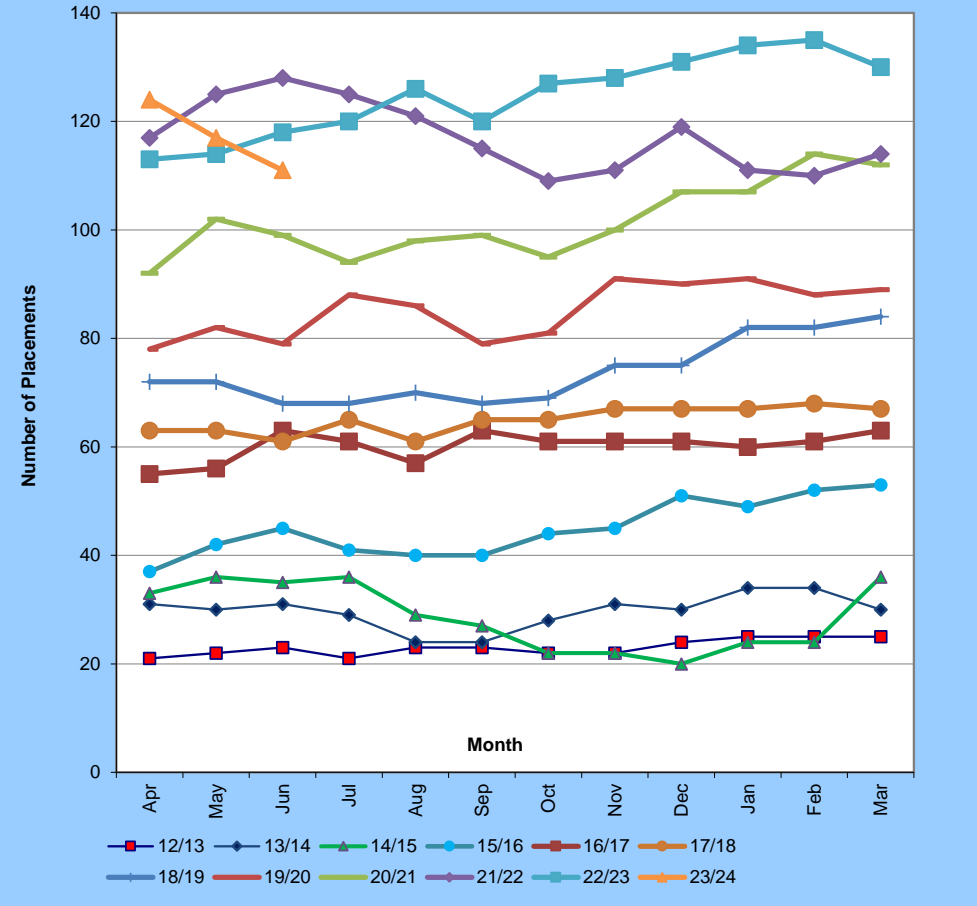
- Notes**
- Youth Offending placements account for the difference between the number of residential and fostering placements and the total.
 - Activity includes unaccompanied asylum seekers
 - The numbers are based on placements in the database at the end of a month. Previous months figures are updated as information becomes available
 - Prior to 2011/12 supported living placements were included within the fostering figures
 - There were a significant number of placements which came in during March 2013 which were only identified from April

This page is intentionally left blank

Total External Agency Placements



Agency Residential Placements



Total Agency Placements

| Mth | 12/13 | 13/14 | 14/15 | 15/16 | 16/17 | 17/18 | 18/19 | 19/20 | 20/21 | 21/22 | 22/23 | 23/24 |
|-----|-------|-------|-------|-------|-------|-------|-------|-------|-------|-------|-------|-------|
| Apr | 131 | 159 | 136 | 153 | 184 | 245 | 270 | 320 | 331 | 436 | 448 | 477 |
| May | 134 | 152 | 138 | 162 | 201 | 252 | 287 | 315 | 356 | 468 | 467 | 466 |
| Jun | 129 | 149 | 142 | 174 | 205 | 248 | 287 | 317 | 354 | 482 | 481 | 436 |
| Jul | 129 | 149 | 138 | 170 | 226 | 247 | 299 | 321 | 375 | 471 | 484 | |
| Aug | 126 | 138 | 132 | 169 | 215 | 241 | 305 | 321 | 392 | 459 | 491 | |
| Sep | 131 | 134 | 136 | 166 | 231 | 251 | 289 | 325 | 381 | 447 | 468 | |
| Oct | 127 | 135 | 134 | 178 | 221 | 246 | 294 | 330 | 375 | 449 | 475 | |

Total Residential Agency Placements

| Mth | 12/13 | 13/14 | 14/15 | 15/16 | 16/17 | 17/18 | 18/19 | 19/20 | 20/21 | 21/22 | 22/23 | 23/24 |
|-----|-------|-------|-------|-------|-------|-------|-------|-------|-------|-------|-------|-------|
| Apr | 21 | 31 | 33 | 37 | 55 | 63 | 72 | 78 | 92 | 117 | 113 | 124 |
| May | 22 | 30 | 36 | 42 | 56 | 63 | 72 | 82 | 102 | 125 | 114 | 117 |
| Jun | 23 | 31 | 35 | 45 | 63 | 61 | 68 | 79 | 99 | 128 | 118 | 111 |
| Jul | 21 | 29 | 36 | 41 | 61 | 65 | 68 | 88 | 94 | 125 | 120 | |
| Aug | 23 | 24 | 29 | 40 | 57 | 61 | 70 | 86 | 98 | 121 | 126 | |
| Sep | 23 | 24 | 27 | 40 | 63 | 65 | 68 | 79 | 99 | 115 | 120 | |
| Oct | 22 | 28 | 22 | 44 | 61 | 65 | 69 | 81 | 95 | 109 | 127 | |

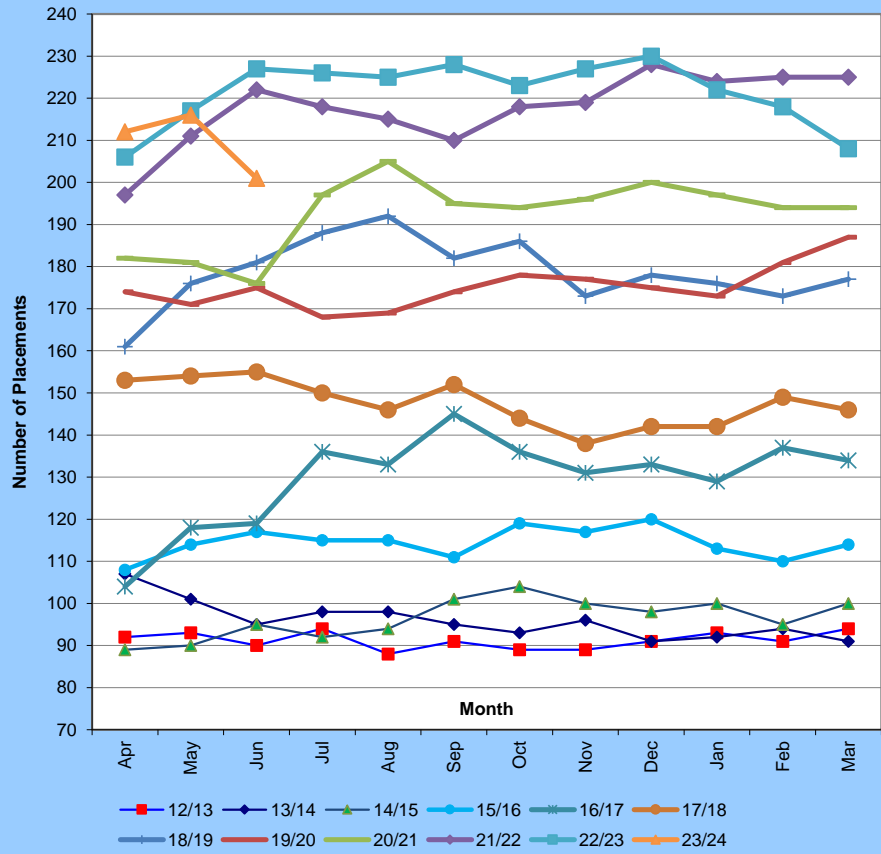
| | | | | | | | | | | | | |
|---------|-----|-----|-----|-----|-----|-----|-----|-----|-----|-----|-----|-----|
| Nov | 127 | 139 | 129 | 176 | 213 | 246 | 295 | 340 | 377 | 460 | 481 | |
| Dec | 127 | 133 | 124 | 189 | 222 | 246 | 307 | 336 | 401 | 486 | 489 | |
| Jan | 129 | 138 | 132 | 180 | 217 | 244 | 314 | 330 | 395 | 474 | 480 | |
| Feb | 126 | 142 | 124 | 178 | 234 | 252 | 312 | 336 | 404 | 475 | 483 | |
| Mar | 129 | 136 | 143 | 187 | 231 | 246 | 313 | 346 | 403 | 480 | 466 | |
| Average | 129 | 142 | 134 | 174 | 217 | 247 | 298 | 328 | 379 | 466 | 476 | 460 |

| | | | | | | | | | | | | |
|---------|----|----|----|----|----|----|----|----|-----|-----|-----|--|
| Nov | 22 | 31 | 22 | 45 | 61 | 67 | 75 | 91 | 100 | 111 | 128 | |
| Dec | 24 | 30 | 20 | 51 | 61 | 67 | 75 | 90 | 107 | 119 | 131 | |
| Jan | 25 | 34 | 24 | 49 | 60 | 67 | 82 | 91 | 107 | 111 | 134 | |
| Feb | 25 | 34 | 24 | 52 | 61 | 68 | 82 | 88 | 114 | 110 | 135 | |
| Mar | 25 | 30 | 36 | 53 | 63 | 67 | 84 | 89 | 112 | 114 | 130 | |
| Average | 23 | 30 | 29 | 45 | 60 | 65 | 74 | 85 | 102 | 117 | 125 | |

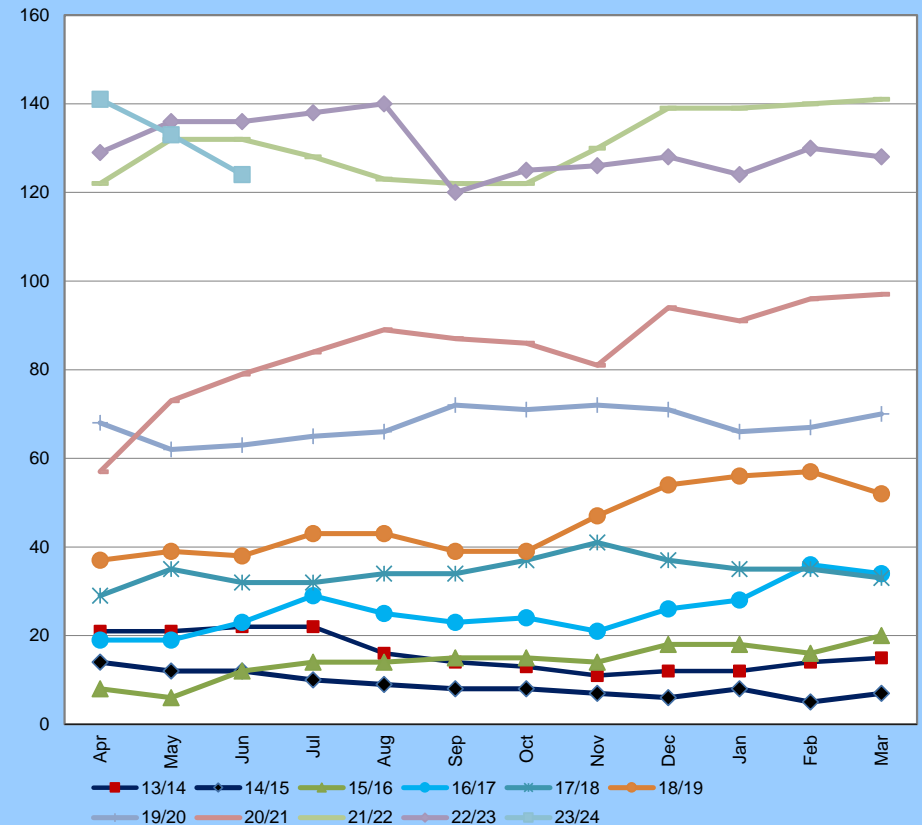
Notes

1. Youth Offending placements account for the difference between the number of residential and fostering placements and the total.
2. Activity includes unaccompanied asylum seekers
3. The numbers are based on placements in the database at the end of a month. Previous months figures are updated as information becomes available
4. Prior to 2011/12 supported living placements were included within the fostering figures
5. There were a significant number of placements which came in during March 2013 which were only identified from April

Agency Fostering Placements



Supported Living Placements



Total Fostering Agency Placements

| Mth | 12/13 | 13/14 | 14/15 | 15/16 | 16/17 | 17/18 | 18/19 | 19/20 | 20/21 | 21/22 | 22/23 | 23/24 |
|-----|-------|-------|-------|-------|-------|-------|-------|-------|-------|-------|-------|-------|
| Apr | 92 | 107 | 89 | 108 | 104 | 153 | 161 | 174 | 182 | 197 | 206 | 212 |
| May | 93 | 101 | 90 | 114 | 118 | 154 | 176 | 171 | 181 | 211 | 217 | 216 |
| Jun | 90 | 95 | 95 | 117 | 119 | 155 | 181 | 175 | 176 | 222 | 227 | 201 |
| Jul | 94 | 98 | 92 | 115 | 136 | 150 | 188 | 168 | 197 | 218 | 226 | |
| Aug | 88 | 98 | 94 | 115 | 133 | 146 | 192 | 169 | 205 | 215 | 225 | |
| Sep | 91 | 95 | 101 | 111 | 145 | 152 | 182 | 174 | 195 | 210 | 228 | |
| Oct | 89 | 93 | 104 | 119 | 136 | 144 | 186 | 178 | 194 | 218 | 223 | |
| Nov | 89 | 96 | 100 | 117 | 131 | 138 | 173 | 177 | 196 | 219 | 227 | |
| Dec | 91 | 91 | 98 | 120 | 133 | 142 | 178 | 175 | 200 | 228 | 230 | |

Supported Living Placements

| Mth | 13/14 | 14/15 | 15/16 | 16/17 | 17/18 | 18/19 | 19/20 | 20/21 | 21/22 | 22/23 | 23/24 |
|-----|-------|-------|-------|-------|-------|-------|-------|-------|-------|-------|-------|
| Apr | 21 | 14 | 8 | 19 | 29 | 37 | 68 | 57 | 122 | 129 | 141 |
| May | 21 | 12 | 6 | 19 | 35 | 39 | 62 | 73 | 132 | 136 | 133 |
| Jun | 22 | 12 | 12 | 23 | 32 | 38 | 63 | 79 | 132 | 136 | 124 |
| Jul | 22 | 10 | 14 | 29 | 32 | 43 | 65 | 84 | 128 | 138 | |
| Aug | 16 | 9 | 14 | 25 | 34 | 43 | 66 | 89 | 123 | 140 | |
| Sep | 14 | 8 | 15 | 23 | 34 | 39 | 72 | 87 | 122 | 120 | |
| Oct | 13 | 8 | 15 | 24 | 37 | 39 | 71 | 86 | 122 | 125 | |
| Nov | 11 | 7 | 14 | 21 | 41 | 47 | 72 | 81 | 130 | 126 | |
| Dec | 12 | 6 | 18 | 26 | 37 | 54 | 71 | 94 | 139 | 128 | |

| | | | | | | | | | | | | |
|-----|----|----|-----|-----|-----|-----|-----|-----|-----|-----|-----|--|
| Jan | 93 | 92 | 100 | 113 | 129 | 142 | 176 | 173 | 197 | 224 | 222 | |
| Feb | 91 | 94 | 95 | 110 | 137 | 149 | 173 | 181 | 194 | 225 | 218 | |
| Mar | 94 | 91 | 100 | 114 | 134 | 146 | 177 | 187 | 194 | 225 | 208 | |
| | 91 | 96 | 97 | 114 | 130 | 148 | 179 | 175 | 193 | 218 | 221 | |

| | | | | | | | | | | | |
|-----|----|---|----|----|----|----|----|----|-----|-----|--|
| Jan | 12 | 8 | 18 | 28 | 35 | 56 | 66 | 91 | 139 | 124 | |
| Feb | 14 | 5 | 16 | 36 | 35 | 57 | 67 | 96 | 140 | 130 | |
| Mar | 15 | 7 | 20 | 34 | 33 | 52 | 70 | 97 | 141 | 128 | |
| | 16 | 9 | 14 | 26 | 35 | 45 | 68 | 85 | 131 | 130 | |